



# Fase Final 8 - Juniores Femininos 2011-2012

# Volley STAT v 5.0

Programa de Análise Estatística de Voleibol

http://www.VolleySTAT.org

© JAC Sport

Jogo : **VITORIA SC** x **ADREP**

**GLOBAL**

Resultado Final **3 - 0**

1º.Set - 25 / 19 - 0 m  
 2º.Set - 25 / 11 - 0 m  
 3º.Set - 25 / 15 - 0 m  
 4º.Set - 0 / 0 - 0 m  
 5º.Set - 0 / 0 - 0 m

Data - 27-05-2012 Hora - 11:30 Local - Odivelas - Pav.Multi

Pontos Ganhos / Perdidos : 75 / 45

Prova - Camp. Nac. Juniores Fem. - Final 8

Duração : h : mm

RECEÇÃO									
Atletas	0	1	2	3	Tt.	Ef.	%		
2	0	2	3	0	5	1,6	53,3		
3	0	2	1	0	3	1,3	44,3		
5	0	0	0	0	0	###	###		
8	2	0	0	0	2	0	0,0		
9	0	1	1	0	2	1,5	50,0		
10	0	0	0	0	0	###	###		
14	0	1	4	0	5	1,8	60,0		
15	0	1	1	0	2	1,5	50,0		
16	1	0	0	0	1	0	0,0		
18	0	0	0	0	0	###	###		
0	0	0	0	0	0	###	###		
1	0	0	1	0	1	2	66,7		
4	0	8	3	9	20	2,1	68,3		
<b>VITORIA SC</b>	<b>3</b>	<b>15</b>	<b>14</b>	<b>9</b>	<b>41</b>	<b>1,7</b>	<b>57,0</b>		

SERVIÇO										
Atletas	0	1	2	3	4	Tt.	Ef.	%		
2	2	2	1	3	10	2,1	53			
2	0	2	4	2	10	2,4	60			
0	1	1	3	0	5	2,4	60			
3	0	2	2	0	7	1,4	36			
0	0	0	0	0	0	###	###			
0	0	1	1	0	2	2,5	63			
0	0	3	2	0	5	2,4	60			
1	2	0	9	6	18	2,9	74			
1	4	3	3	0	11	1,7	43			
1	1	2	0	0	4	1,3	31			
0	0	0	0	0	0	###	###			
<b>VITORIA SC</b>	<b>10</b>	<b>10</b>	<b>16</b>	<b>25</b>	<b>11</b>	<b>72</b>	<b>2,2</b>	<b>56,0</b>		

ATAQUE																			
K-s/o	C-s/o	E-s/o	K-ral	C-ral	E-ral	Kill	Cont.	Err	S/O	Rally	Atk	EAsc	EKsc	Ear	Ekr	E.At	E.K		
1	3	2	3	7	0	4	10	2	6	10	16	-17	17	30	30	13	25		
5	2	0	8	3	1	13	5	1	7	12	19	71	71	58	67	63	68		
0	0	0	0	0	0	0	0	0	0	0	0	###	###	###	###	###	###		
0	3	2	3	9	1	3	12	3	5	13	18	-40	0	15	23	0	17		
0	1	0	1	2	0	1	3	0	1	3	4	0	0	33	33	25	25		
0	2	0	1	3	0	1	5	0	2	4	6	0	0	25	25	17	17		
3	2	0	4	3	0	7	5	0	5	7	12	60	60	57	57	58	58		
1	4	0	3	1	0	4	5	0	5	4	9	20	20	75	75	44	44		
0	3	1	1	4	2	1	7	3	4	7	11	-25	0	-14	14	-18	9,1		
1	0	0	2	5	2	3	5	2	1	9	10	100	100	0	22	10	30		
0	0	0	0	0	0	0	0	0	0	0	0	###	###	###	###	###	###		
0	0	0	0	0	0	0	0	0	0	0	0	###	###	###	###	###	###		
0	0	0	0	0	0	0	0	0	0	0	0	###	###	###	###	###	###		
0	0	0	1	0	0	1	0	0	0	1	1	###	###	100	100	100	100		
<b>VITORIA SC</b>	<b>11</b>	<b>20</b>	<b>5</b>	<b>27</b>	<b>37</b>	<b>6</b>	<b>38</b>	<b>57</b>	<b>11</b>	<b>36</b>	<b>70</b>	<b>16,7</b>	<b>31</b>	<b>30,0</b>	<b>39</b>	<b>25</b>	<b>36</b>		

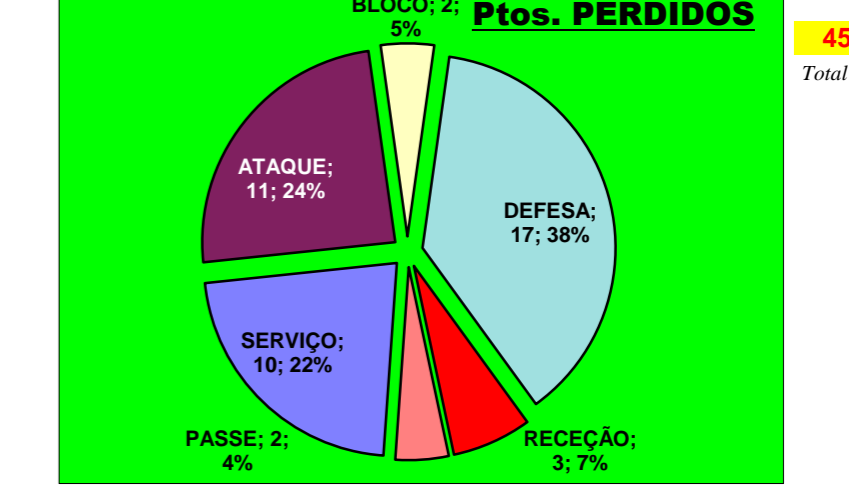
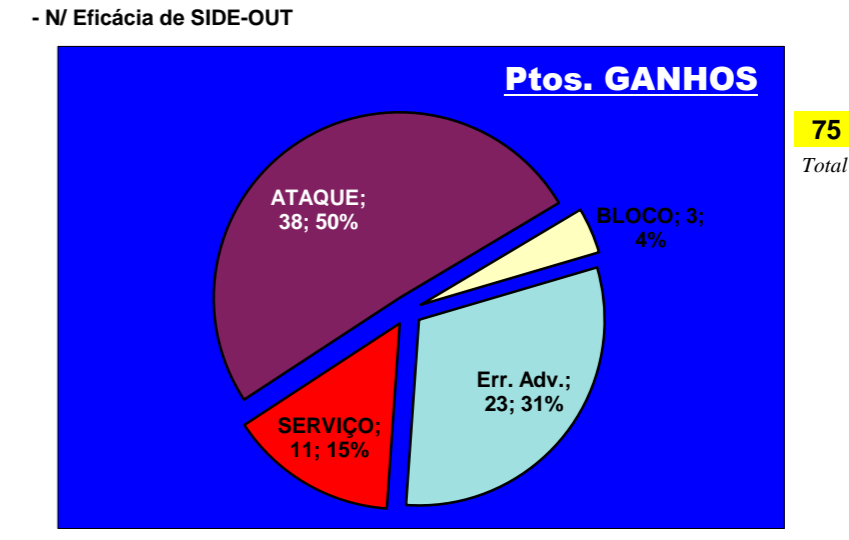
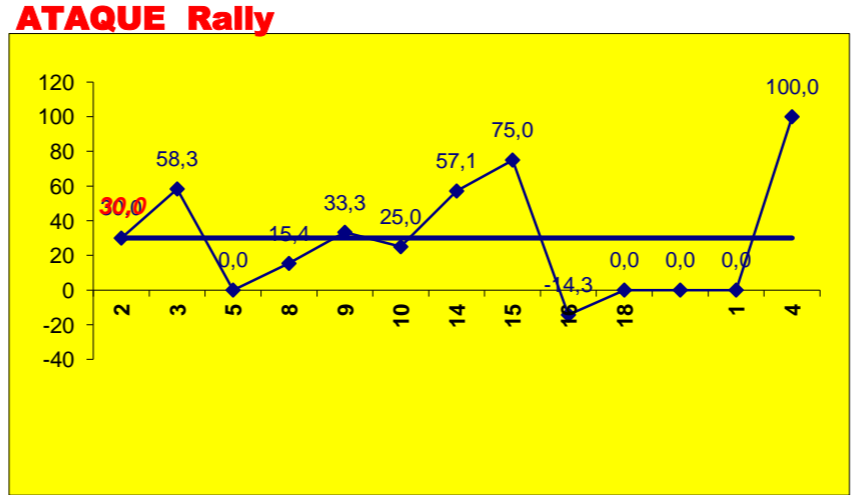
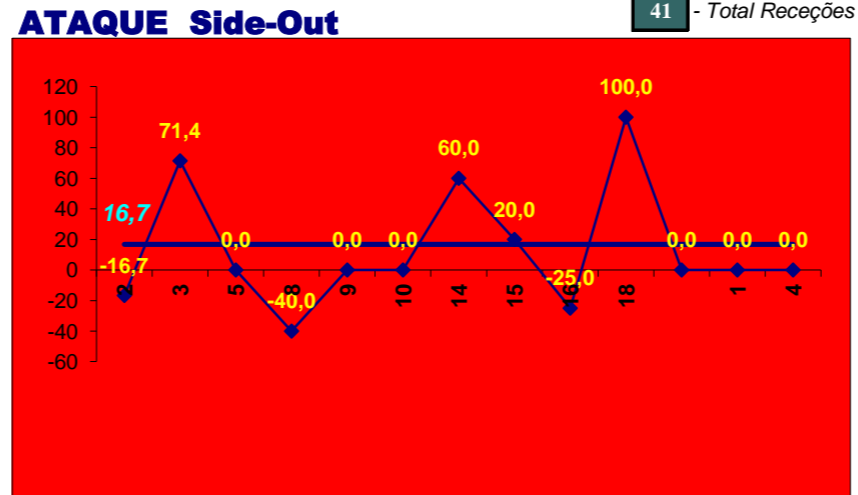
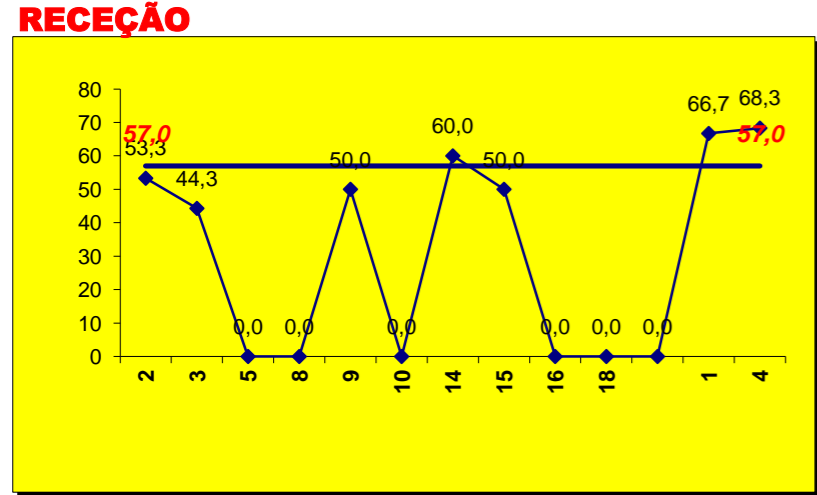
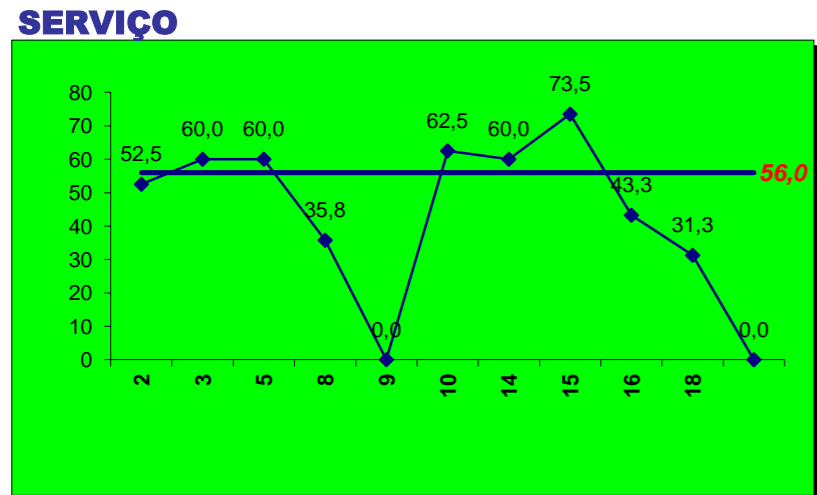
BLOCO					
K	C	E	Tt.	Ef.	
0	4	1	5	-20	
3	6	1	10	20	
0	0	0	0	###	
0	1	0	1	0	
0	0	0	0	###	
0	1	0	1	0	
0	1	0	1	0	
0	3	0	3	0	
0	0	0	0	###	
0	2	0	2	0	
0	0	0	0	###	
<b>VITORIA SC</b>	<b>3</b>	<b>18</b>	<b>2</b>	<b>23</b>	<b>4,4</b>

DEFESA			
E	Cont.	Tt.	
1	8	9	
6	14	20	
1	2	3	
0	7	7	
0	0	0	
0	0	0	
0	0	0	
2	2	4	
3	12	15	
1	4	5	
0	0	0	
0	0	0	
0	0	0	
3	20	23	
<b>VITORIA SC</b>	<b>17</b>	<b>69</b>	<b>86</b>

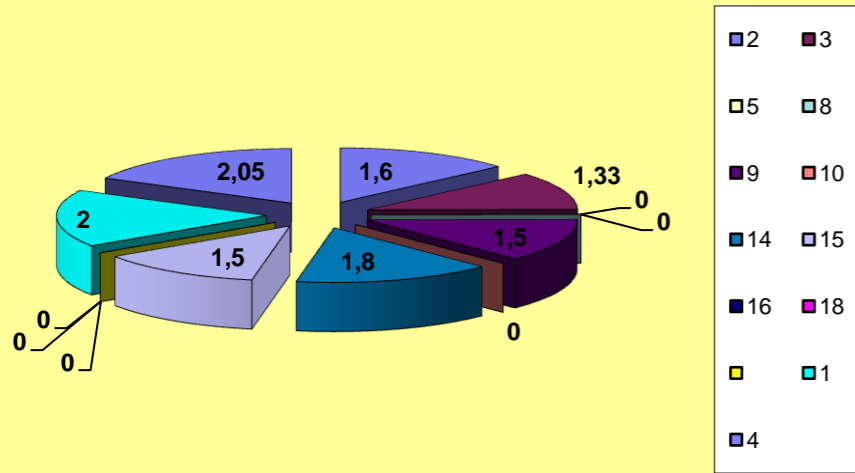
PASSE			
E	R/C	Cont.	
0	0	1	
0	0	8	
2	4	12	
0	0	5	
0	0	1	
0	0	0	
0	0	0	
0	0	0	
0	8	51	
0	0	3	
0	0	4	
0	0	0	
0	0	0	
0	0	0	
0	0	3	
<b>VITORIA SC</b>	<b>2</b>	<b>12</b>	<b>88</b>

Adversário **ADREP** Ef. RECEÇÃO - 1,4 46,7% Ef. SERVIÇO - 2,0 51,0%

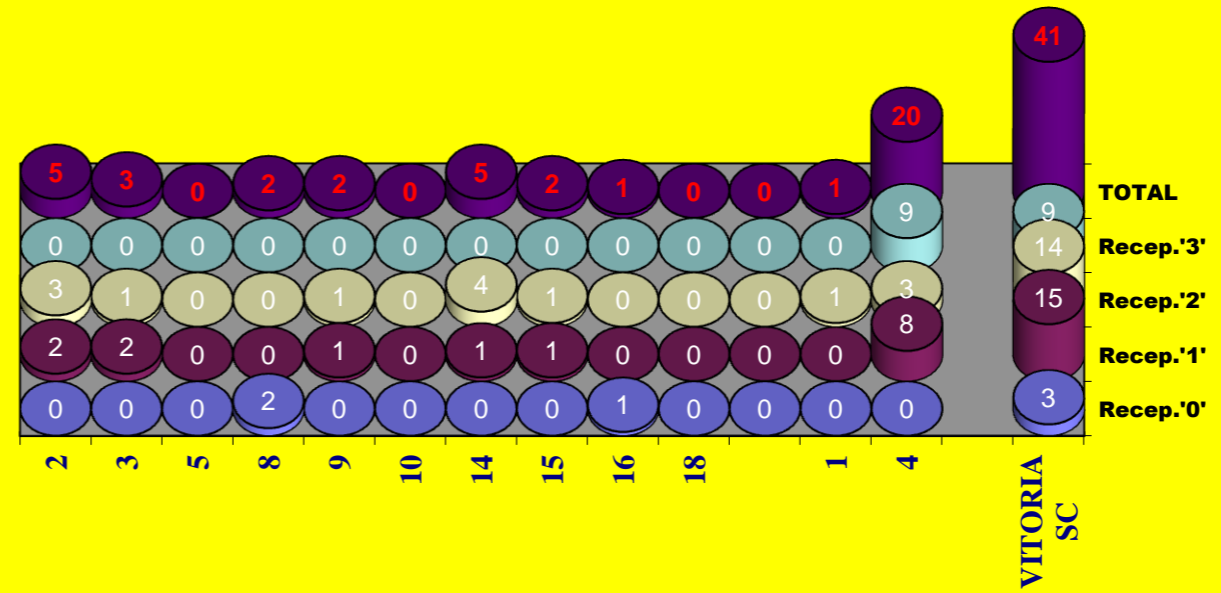
Outros ERROS ADVERSÁRIOS - 18 11 - Total Kills S-O 26,8% 41 - Total Receções



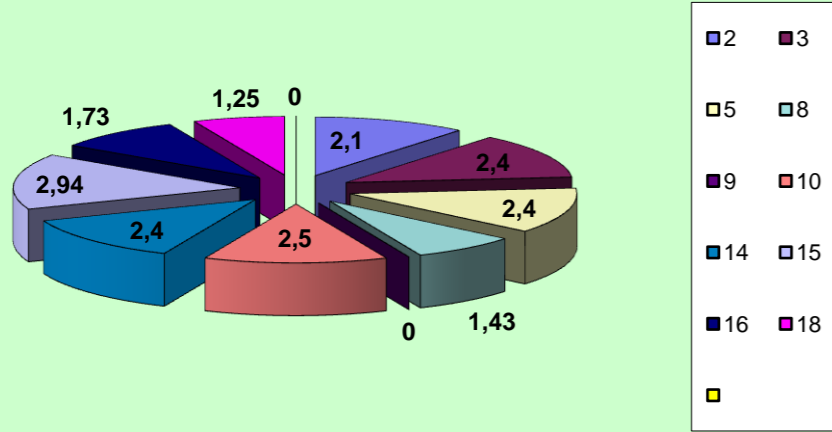
### RECEÇÃO



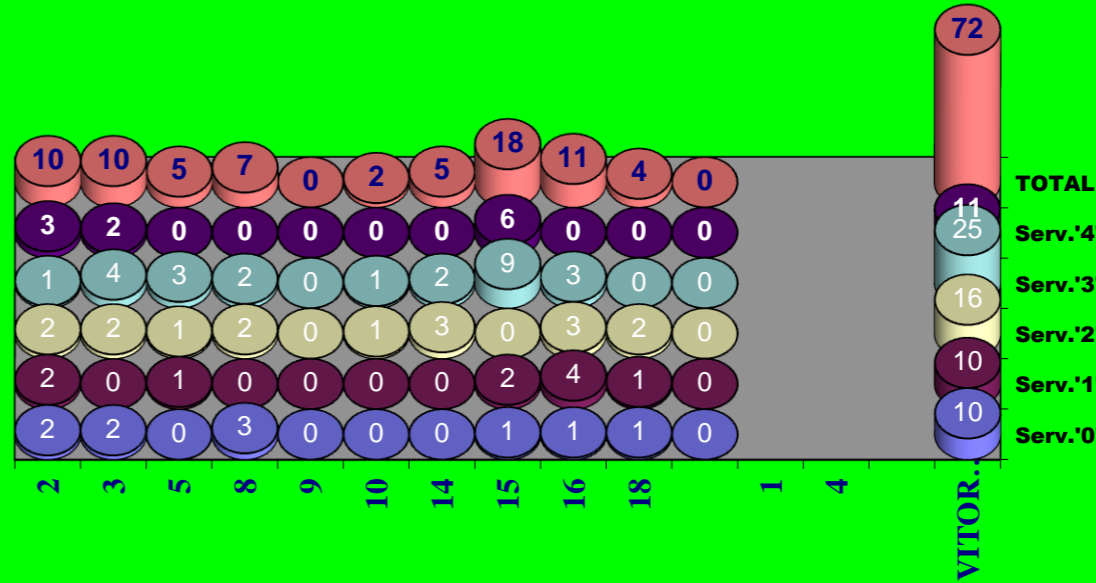
### RECEÇÃO



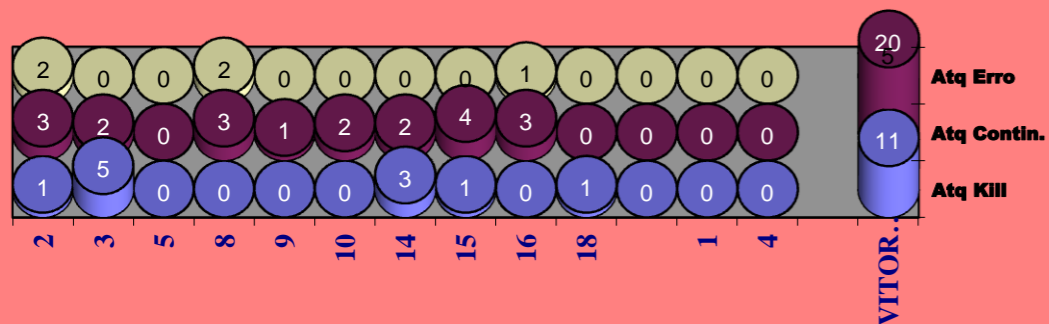
### SERVIÇO



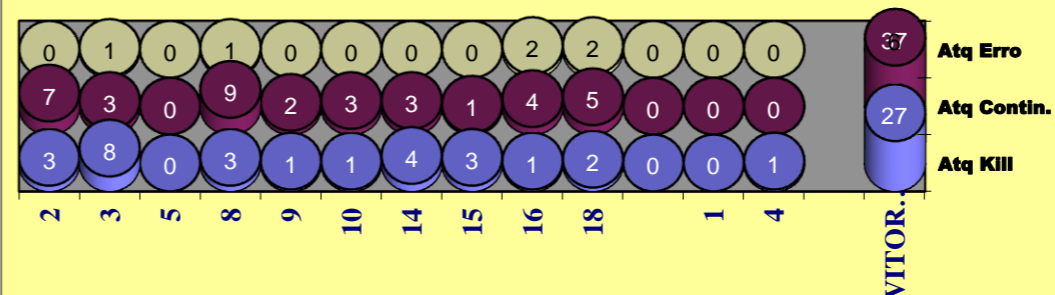
### SERVIÇO

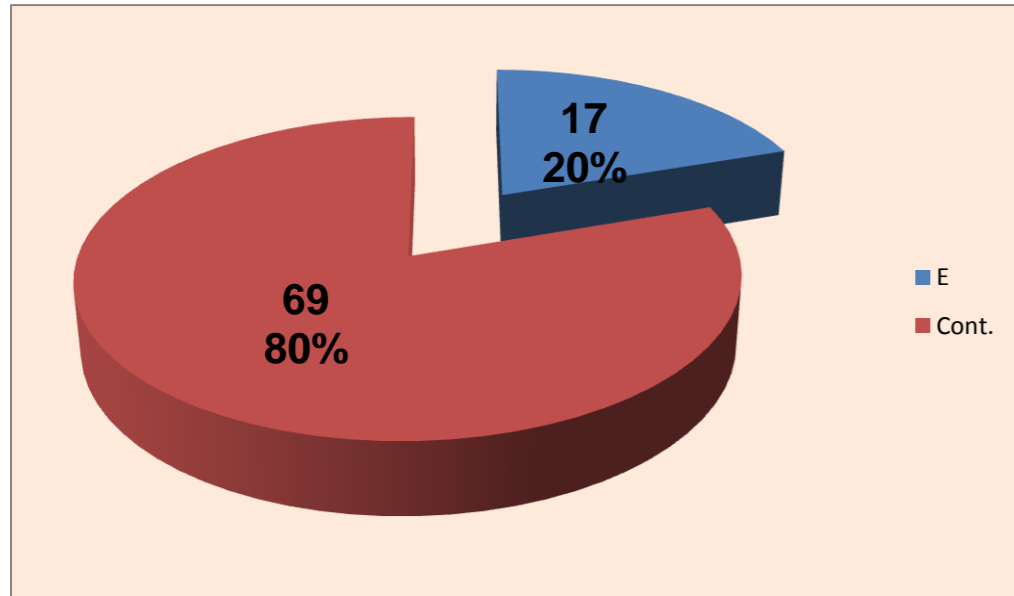


### Ataque Side-Out



### Ataque Rally



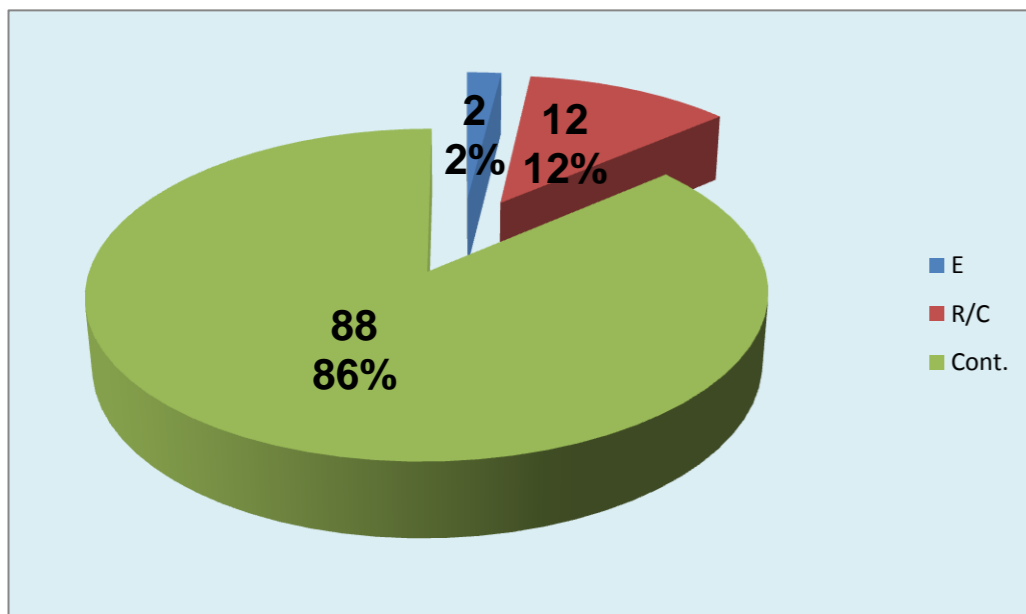
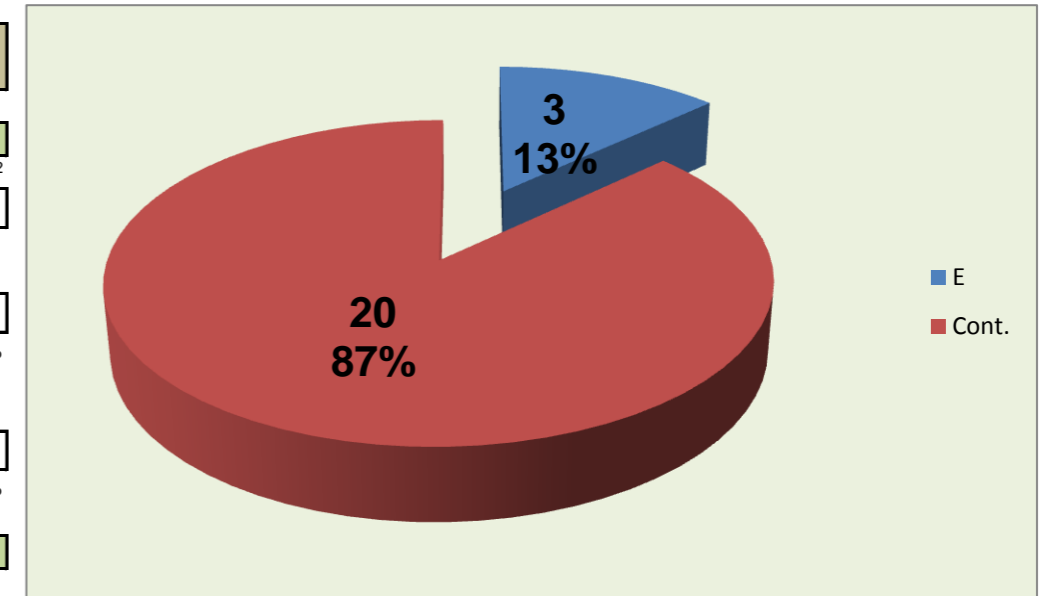


## DEFESA

	VITORIA SC Team	LÍBEROS Liberos	1 Libero 1	4 Libero 2
Total	86	23	0	23
Erro	17 20%	3 13%	0 #DIV/0!	3 13%
Cont.	69 80%	20 87%	0 #DIV/0!	20 87%

VITORIA SC

LÍBEROS



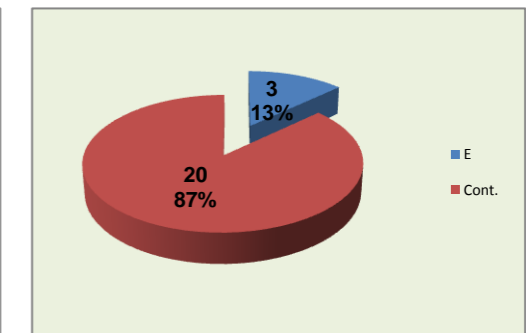
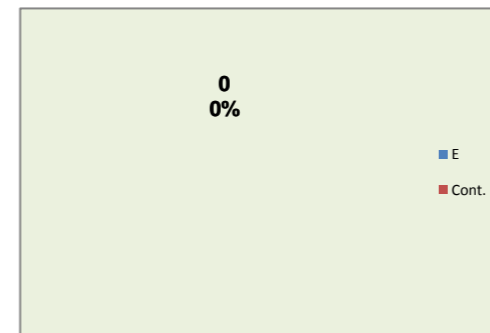
## PASSE

### Relação da Distribuição

Total de Distribuições	102
Jogo Rápido / Combin.	12 12%
Distribuição Normal	88 86%
Erros de Passe	2 2%

Libero 1 1

Libero 2 4





# Fase Final 8 - Juniores Femininos 2011-2012

Jogo : **VITORIA SC** x **ADREP**

**GLOBAL**

Resultado : **3** - **0**

Duração : **h** : **mm** h

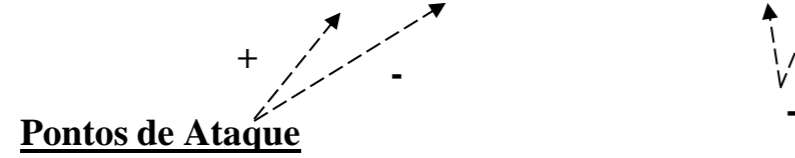
1º.Set -	25	19	0 m
2º.Set -	25	11	0 m
3º.Set -	25	15	0 m
4º.Set -	0	0	0 m
5º.Set -	0	0	0 m

	SERVIÇO			ATAQUE			BLOCO			DEFESA	RECEÇÃO	PASSE
	T	+	-	T	+	-	T	+	-			
2	5	3	2	6	4	2	1	0	1	1	0	0
3	4	2	2	14	13	1	4	3	1	6	0	0
5	0	0	0	0	0	0	0	0	0	1	0	2
8	3	0	3	6	3	3	0	0	0	0	2	0
9	0	0	0	1	1	0	0	0	0	0	0	0
10	0	0	0	1	1	0	0	0	0	0	0	0
14	0	0	0	7	7	0	0	0	0	2	0	0
15	7	6	1	4	4	0	0	0	0	3	0	0
16	1	0	1	4	1	3	0	0	0	1	1	0
18	1	0	1	5	3	2	0	0	0	0	0	0
0	0	0	0	0	0	0	0	0	0	0	0	0
1				0	0	0				0	0	0
4				1	1	0				3	0	0
<b>VITORIA SC</b>	<b>21</b>	<b>11</b>	<b>10</b>	<b>49</b>	<b>38</b>	<b>11</b>	<b>5</b>	<b>3</b>	<b>2</b>	<b>17</b>	<b>3</b>	<b>2</b>

Total		
T	P+	P-
13	7	6
28	18	10
3	0	3
11	3	8
1	1	0
1	1	0
9	7	2
14	10	4
7	1	6
6	3	3
0	0	0
0	0	0
4	1	3
<b>97</b>	<b>52</b>	<b>45</b>

Eficácia Absoluta (%)		
P+	P-	Final
53,8	46,2	7,7
64,3	35,7	28,6
0	100	-100
27,3	72,7	-45,5
100	0	100
100	0	100
77,8	22,2	55,6
71,4	28,6	42,9
14,3	85,7	-71,4
50	50	0
#DIV/0!	#DIV/0!	#DIV/0!
#DIV/0!	#DIV/0!	#DIV/0!
25	75	-50
<b>53,6</b>	<b>46,4</b>	<b>7,2</b>

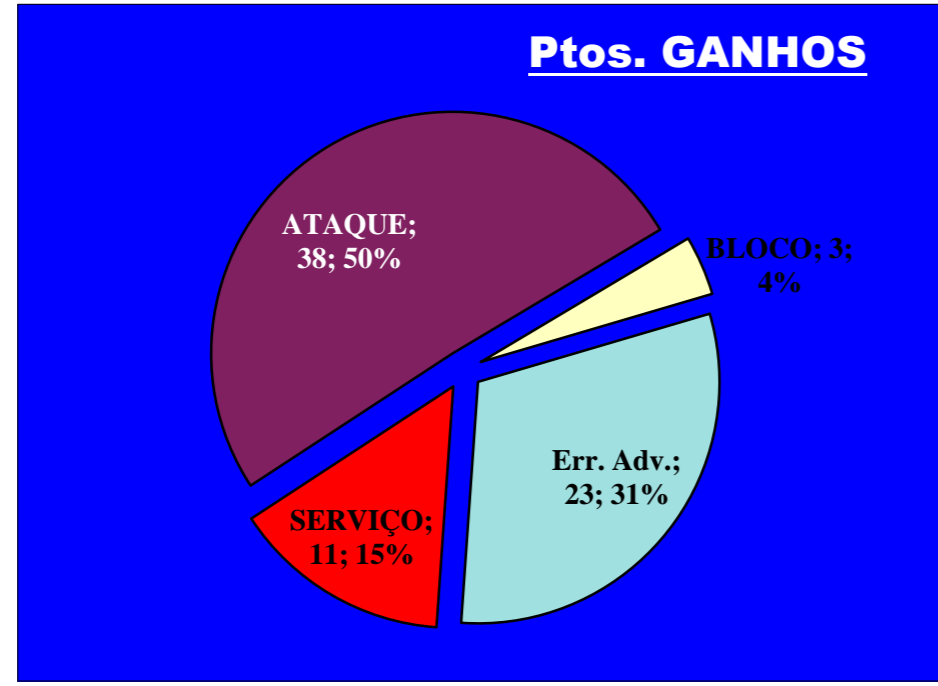
Eficácia Relativa (%)		
P+	P-	Final
13,5	13,3	1
34,6	22,2	8,2
0	6,7	-3,1
5,8	17,8	-5,2
1,9	0	1
1,9	0	1
13,5	4,4	5,2
19,2	8,9	6,2
1,9	13,3	-5,2
5,8	6,7	0
0	0	0
0	0	0
1,9	6,7	-2,1



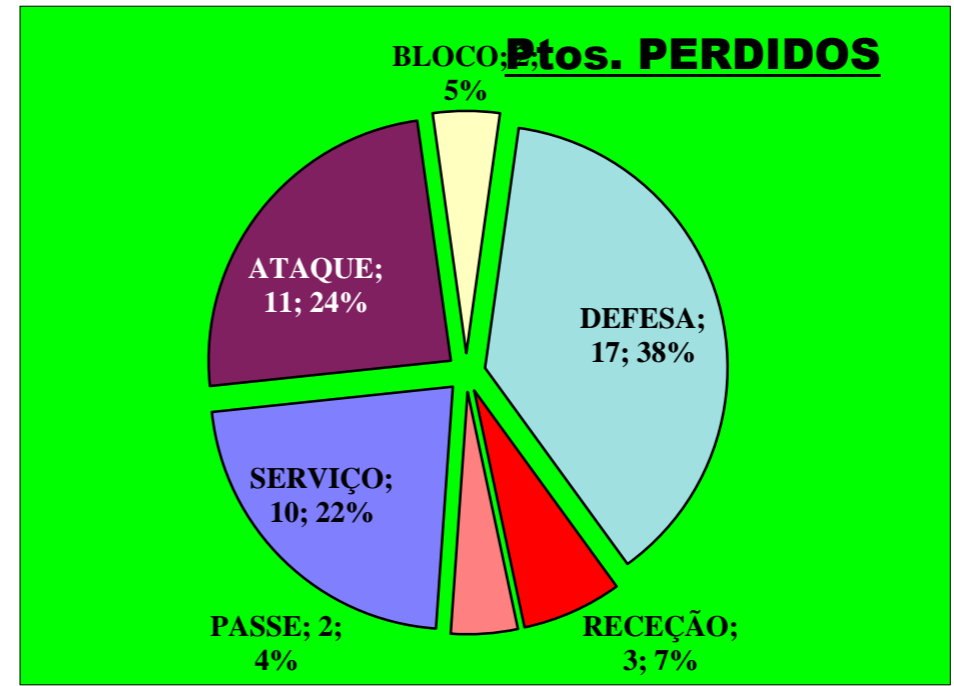
- 23** : Erros do Adversário
- 0** : Pontos "+" Não Reportados
- 0** : Pontos "-" Não Reportados

PONTOS GANHOS **75**

PONTOS PERDIDOS **45**



**75**  
Total



**45**  
Total



# Fase Final 8 - Juniores Femininos 2011-2012

Jogo : **VITORIA SC** x **ADREP**

Data - 27-05-2012 Hora - 11:30 Local - Odivelas - Pav.Multi

Prova - Camp. Nac. Juniores Fem. - Final 8

1º. Set

Resultado : **25** - **19**

Duração : **██** m

Atletas	RECEÇÃO				Tt.	Ef.	%	Atletas	SERVIÇO				Tt.	Ef.	%		
	0	1	2	3					0	1	2	3	4				
2		1	1		2	1,5	50,0					2	3,3	81			
3		1			1	1	33,3					2	1,5	38			
5					0	###	###					0	###	###			
8	1				1	0	0,0					3	1,7	42			
9					0	###	###					0	###	###			
10					0	###	###					0	###	###			
14					0	###	###					0	###	###			
15					0	###	###					5	3,4	85			
16	1				1	0	0,0		1	4	1	2	8	1,5	38		
18					0	###	###			1	2		3	1,7	42		
					0	###	###					0	###	###			
1			1		1	2	66,7										
4		5	2	3	10	1,8	60,0										
<b>VITORIA SC</b>	<b>2</b>	<b>7</b>	<b>4</b>	<b>3</b>	<b>16</b>	<b>1,5</b>	<b>50,0</b>	%	<b>3</b>	<b>5</b>	<b>5</b>	<b>8</b>	<b>4</b>	<b>25</b>	<b>2,2</b>	<b>55</b>	%

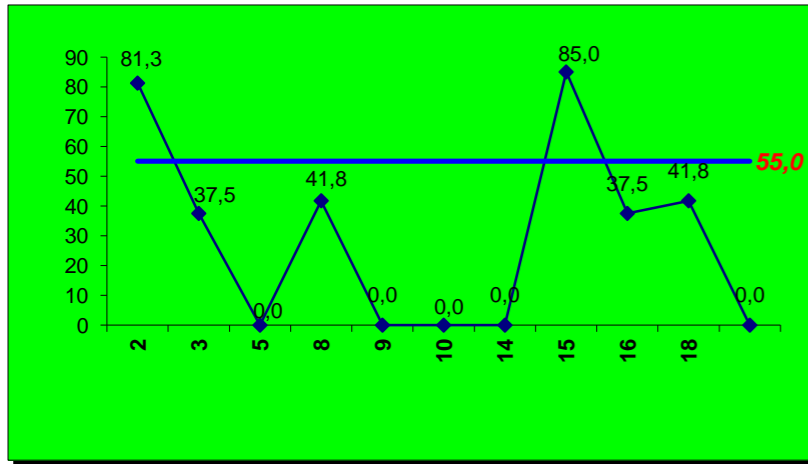
(entre 0 e 3)

(entre 0 e 4)

Adversário **ADREP** Ef. RECEÇÃO - **1,5** **50,0**% **3** Falhados Ef. SERVIÇO - **2,1** **53**%

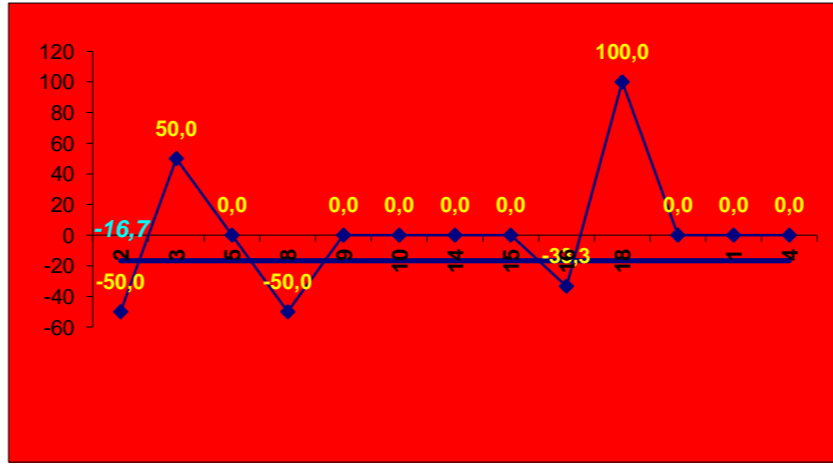
Outros ERROS ADVERSÁRIOS - **7** **2** - Total Kills S-O **13**% **16** - Total Receções

## SERVIÇO



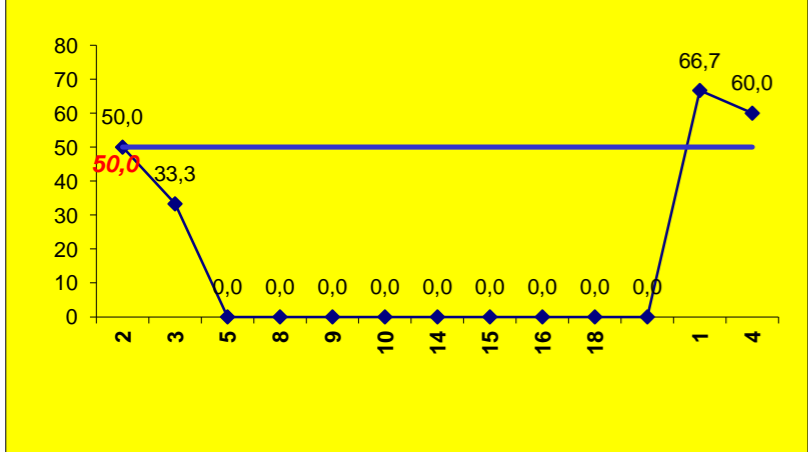
**25**  
**2,2** : Índice  
(entre 0 e 4)

## ATAQUE Side-Out



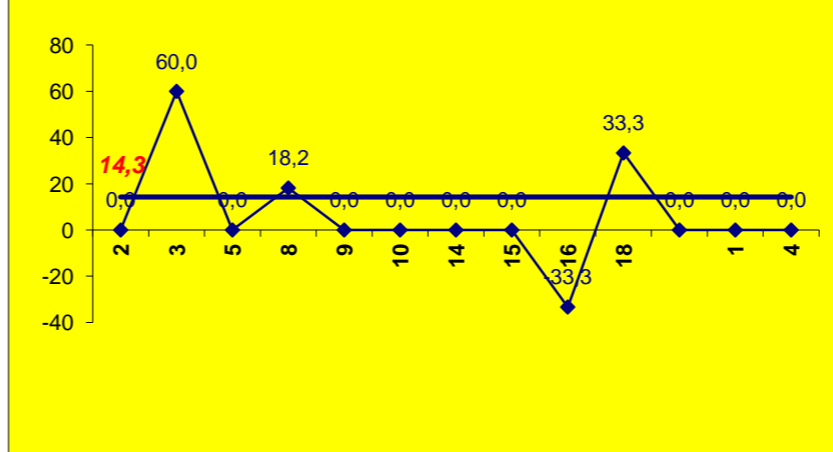
**12**

## RECEÇÃO



**16**  
**1,5** : Índice  
(entre 0 e 3)

## ATAQUE Rally



**28**

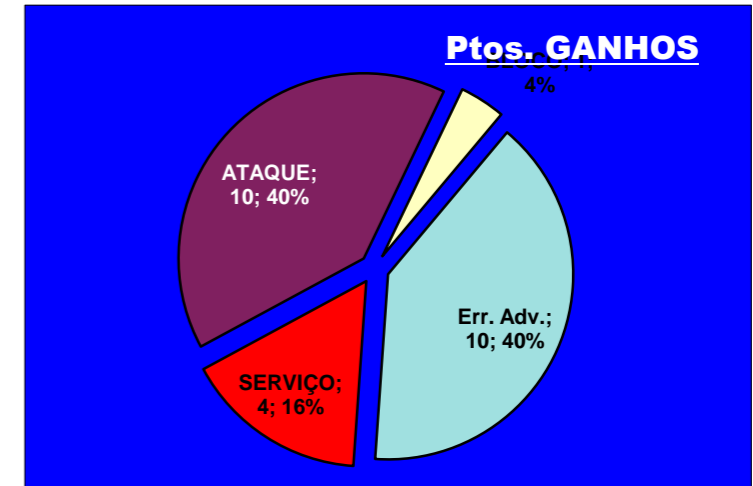
	K-s/o	C-s/o	E-s/o	K-ral	C-ral	E-ral	Kill	Cont.	Err	S/O	Rally	Atk	EAsq	EKsc	Ear	Ekr	E.At	E.K	
																			1
1	1	1			3		0	4	1	2	3	5	-50	0	0	0	-20	0	
1	1			4		1	5	1	1	2	5	7	50	50	60	80	57	71	
2	2			3	7	1	3	9	3	4	11	15	-50	0	18	27	0	20	
							0	0	0	0	0	0	###	###	###	###	###	###	
							0	0	0	0	0	0	###	###	###	###	###	###	
							0	0	0	0	0	0	###	###	###	###	###	###	
							0	0	0	0	0	0	###	###	###	###	###	###	
							0	0	0	0	0	0	###	###	###	###	###	###	
							0	0	0	0	0	0	###	###	###	###	###	###	
							0	0	0	0	0	0	###	###	###	###	###	###	
							0	0	0	0	0	0	###	###	###	###	###	###	
							0	0	0	0	0	0	###	###	###	###	###	###	
							0	0	0	0	0	0	###	###	###	###	###	###	
							0	0	0	0	0	0	###	###	###	###	###	###	
							0	0	0	0	0	0	###	###	###	###	###	###	
<b>2</b>	<b>6</b>	<b>4</b>	<b>4</b>	<b>8</b>	<b>16</b>	<b>4</b>	<b>10</b>	<b>22</b>	<b>8</b>	<b>12</b>	<b>28</b>	<b>40</b>	<b>-17</b>	<b>17</b>	<b>14</b>	<b>29</b>	<b>5</b>	<b>25</b>	

	K	C	E	Tt.	Ef.
2				2	0
1	4			5	20
				0	###
				1	0
				0	###
				0	###
				0	###
				0	###
				0	###
2				2	0
				0	###
				0	###
				0	###
<b>1</b>	<b>9</b>	<b>0</b>	<b>10</b>	<b>10</b>	<b>10</b>

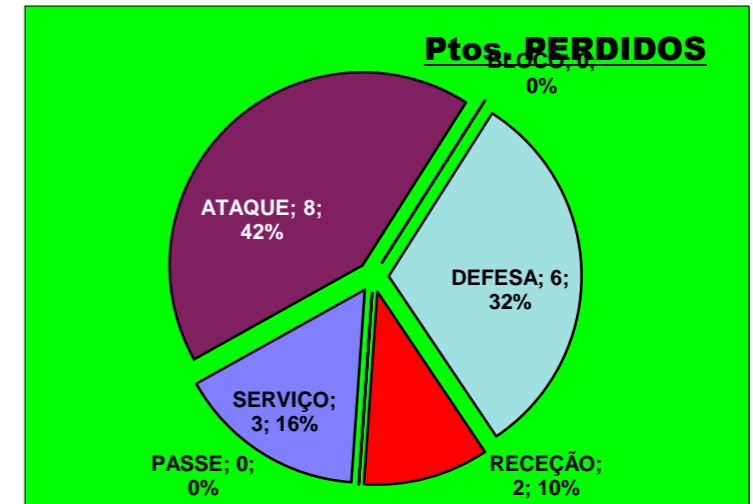
	E	Cont.	Tt.
1	5	6	
3	2	5	
		0	
	4	4	
		0	
		0	
		0	
1	5	6	
	2	2	
		0	
		0	
1	7	8	
<b>6</b>	<b>25</b>	<b>31</b>	

	E	R/C	Cont.
			1
			5
			5
			4
			19
			3
<b>0</b>	<b>4</b>	<b>35</b>	

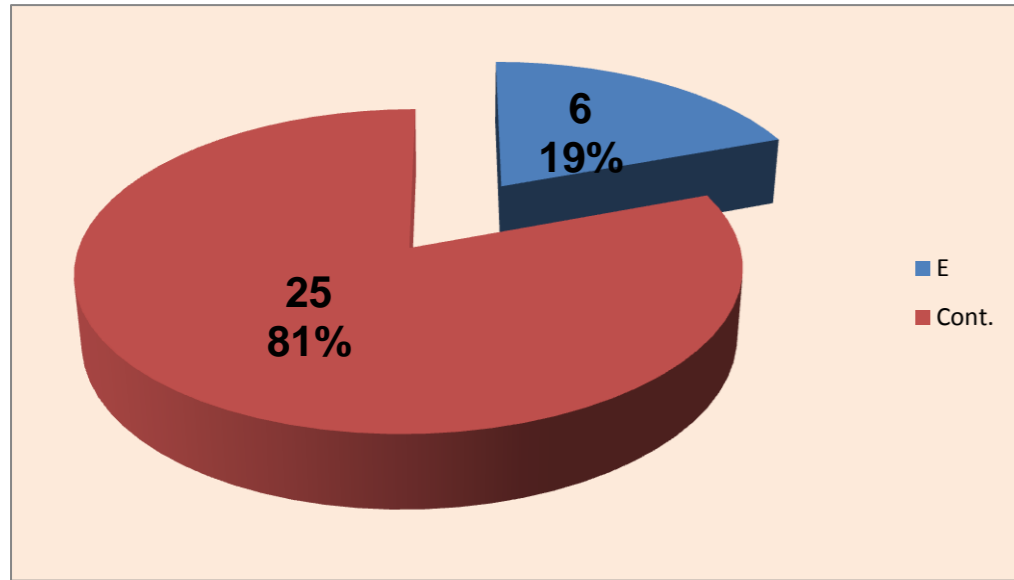
- N/ Eficácia de SIDE-OUT



**25**



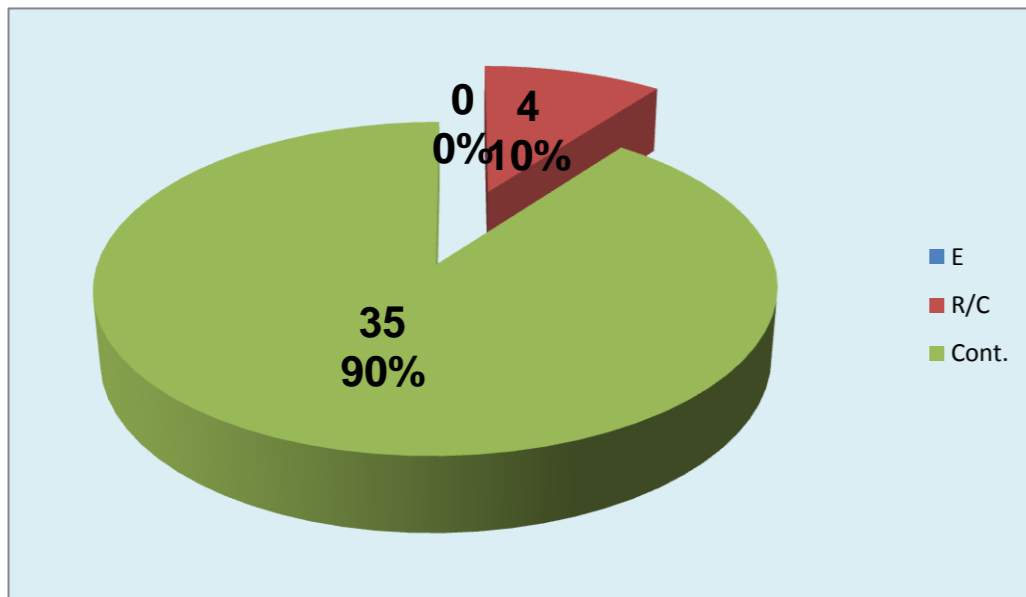
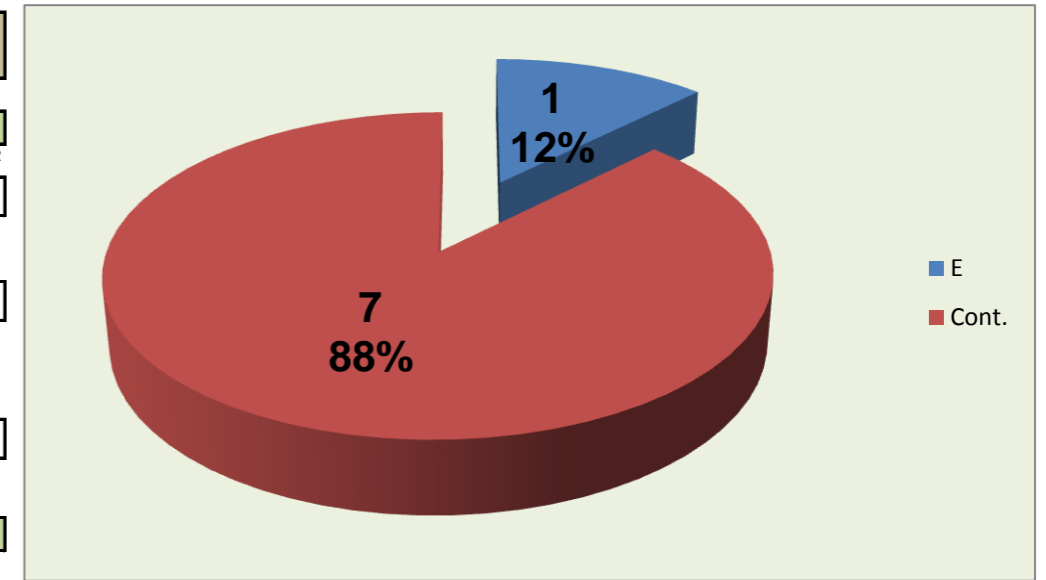
**19**



## DEFESA

	VITORIA SC <small>Team</small>	LÍBEROS	1 <small>Libero 1</small>	4 <small>Libero 2</small>
Total	31	8	0	8
Erro	6 <small>19%</small>	1 <small>13%</small>	0 <small>#DIV/0!</small>	1 <small>13%</small>
Cont.	25 <small>81%</small>	7 <small>88%</small>	0 <small>#DIV/0!</small>	7 <small>88%</small>

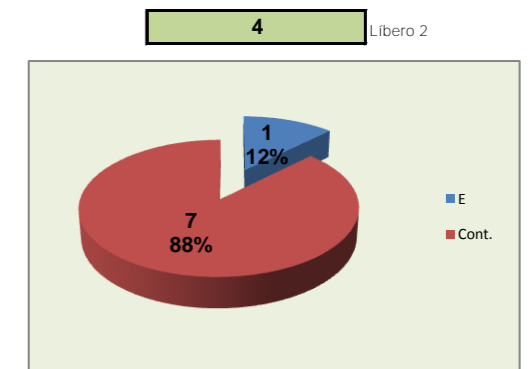
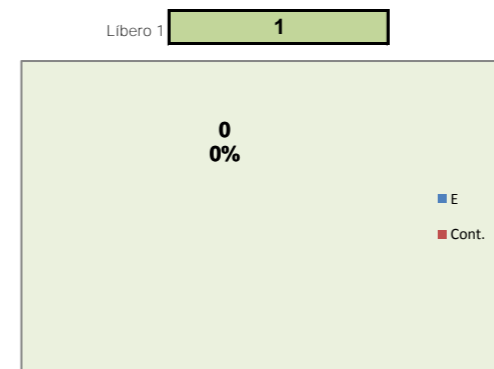
VITORIA SC LIBEROS



## PASSE

### Relação da Distribuição

Total de Distribuições	39
Jogo Rápido / Combin.	4 <small>10%</small>
Distribuição Normal	35 <small>90%</small>
Erros de Passe	0 <small>0%</small>





# Fase Final 8 - Juniores Femininos 2011-2012

Jogo : **VITORIA SC** x **ADREP**

**1º. Set**

Resultado : **25** - **19**

Duração : **0** m

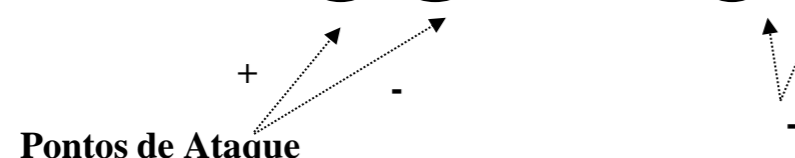
Resultados Globais

	SERVIÇO			ATAQUE			BLOCO			DEFESA	RECEÇÃO	PASSE
	T	+	-	T	+	-	T	+	-			
2	2	2	0	1	0	1	0	0	0	1	0	0
3	1	0	1	6	5	1	1	1	0	3	0	0
5	0	0	0	0	0	0	0	0	0	0	0	0
8	1	0	1	6	3	3	0	0	0	0	1	0
9	0	0	0	0	0	0	0	0	0	0	0	0
10	0	0	0	0	0	0	0	0	0	0	0	0
14	0	0	0	0	0	0	0	0	0	0	0	0
15	2	2	0	0	0	0	0	0	0	1	0	0
16	1	0	1	3	0	3	0	0	0	0	1	0
18	0	0	0	2	2	0	0	0	0	0	0	0
0	0	0	0	0	0	0	0	0	0	0	0	0
1				0	0	0				0	0	0
4				0	0	0				1	0	0
<b>VITORIA SC</b>	<b>7</b>	<b>4</b>	<b>3</b>	<b>18</b>	<b>10</b>	<b>8</b>	<b>1</b>	<b>1</b>	<b>0</b>	<b>6</b>	<b>2</b>	<b>0</b>

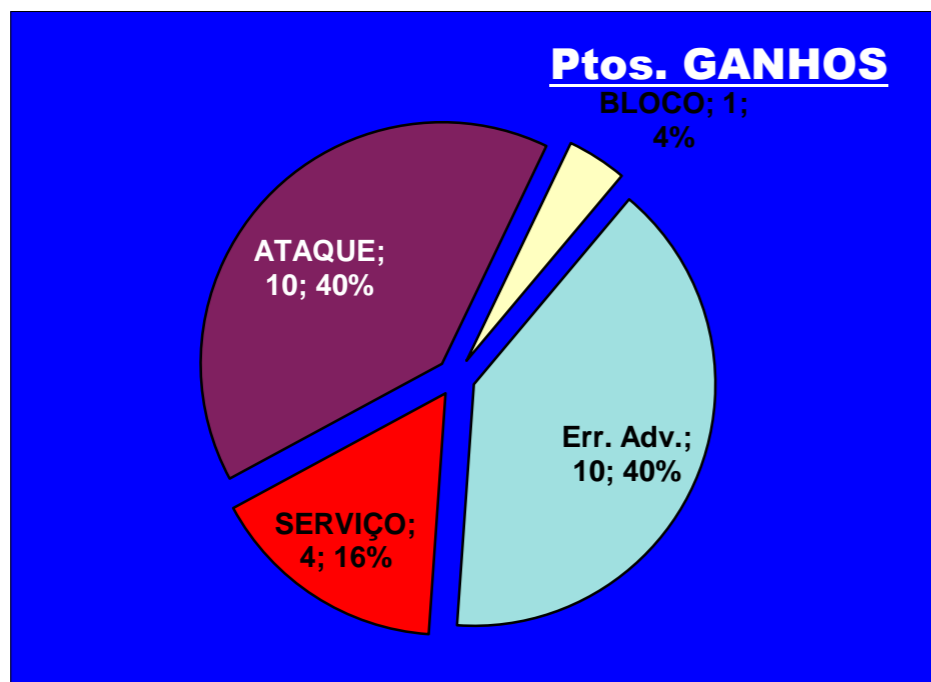
Total		
T	P+	P-
4	2	2
11	6	5
0	0	0
8	3	5
0	0	0
0	0	0
0	0	0
3	2	1
5	0	5
2	2	0
0	0	0
0	0	0
1	0	1
<b>34</b>	<b>15</b>	<b>19</b>

Eficácia Absoluta (%)		
P+	P-	Final
50	50	0
54,5	45,5	9,1
#DIV/0!	#DIV/0!	#DIV/0!
37,5	62,5	-25
#DIV/0!	#DIV/0!	#DIV/0!
#DIV/0!	#DIV/0!	#DIV/0!
#DIV/0!	#DIV/0!	#DIV/0!
66,7	33,3	33,3
0	100	-100
100	0	100
#DIV/0!	#DIV/0!	#DIV/0!
#DIV/0!	#DIV/0!	#DIV/0!
<b>44,1</b>	<b>55,9</b>	<b>-11,8</b>

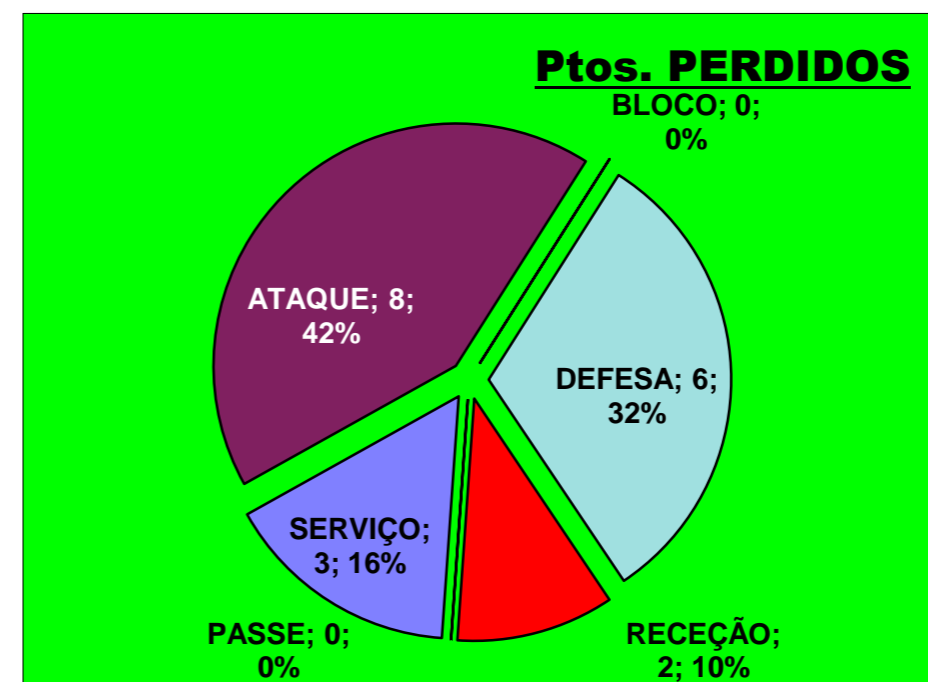
Eficácia Relativa (%)		
P+	P-	Final
13,3	10,5	0
40	26,3	2,9
0	0	0
20	26,3	-5,9
0	0	0
0	0	0
0	0	0
13,3	5,3	2,9
0	26,3	-14,7
13,3	0	5,9
0	0	0
0	0	0
<b>100%</b>	<b>100%</b>	<b>-</b>



- 10** : Erros do Adversário
- 0** : Pontos " + " Não Reportados
- 0** : Pontos " - " Não Reportados
- 25** : PONTOS GANHOS
- 19** : PONTOS PERDIDOS



**25**



**19**



# Fase Final 8 - Juniores Femininos 2011-2012

# Volley STAT V 5.0

Programa de Análise Estatística de Voleibol

http://www.VolleySTAT.org

© JAC Sport

Jogo: **VITORIA SC** x **ADREP**

**2º. Set**

Resultado: **25** - **11**

Duração:  m

RECEÇÃO						
Atletas	0	1	2	3	Tt.	Ef. %
2		1			1	33,3
3		1	1		2	50,0
5					0	###
8					0	###
9					0	###
10					0	###
14			2		2	66,7
15					0	###
16					0	###
18					0	###
0					0	###
1					0	###
4		1	1	4	6	83,3
<b>VITORIA SC</b>	<b>0</b>	<b>3</b>	<b>4</b>	<b>4</b>	<b>11</b>	<b>69,7 %</b>

SERVIÇO						
Atletas	0	1	2	3	4	Tt. Ef. %
1	1					2 0,5 13
1			2	1	1	5 2,2 55
						0 ### ###
						0 ### ###
						0 ### ###
			1	1		2 2,5 63
			1	1		2 2,5 63
		2		2	3	7 2,9 72
		2	1			3 2,3 58
1						1 0 0
						0 ### ###
<b>ADREP</b>	<b>3</b>	<b>3</b>	<b>6</b>	<b>6</b>	<b>4</b>	<b>22 2,2 56 %</b>

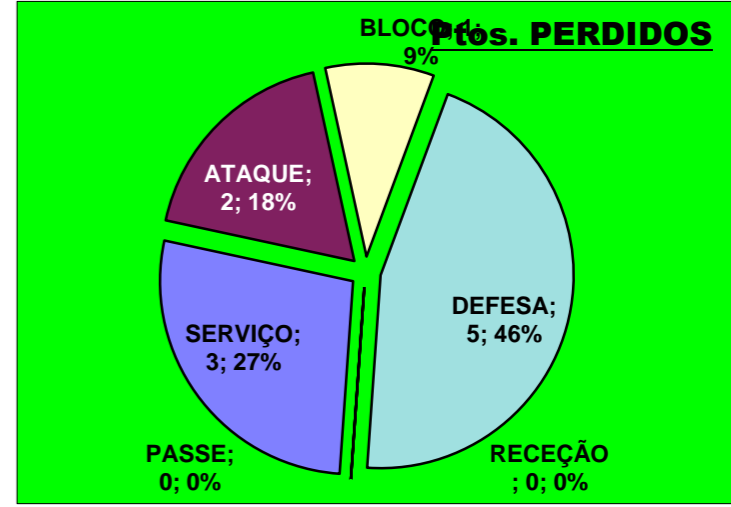
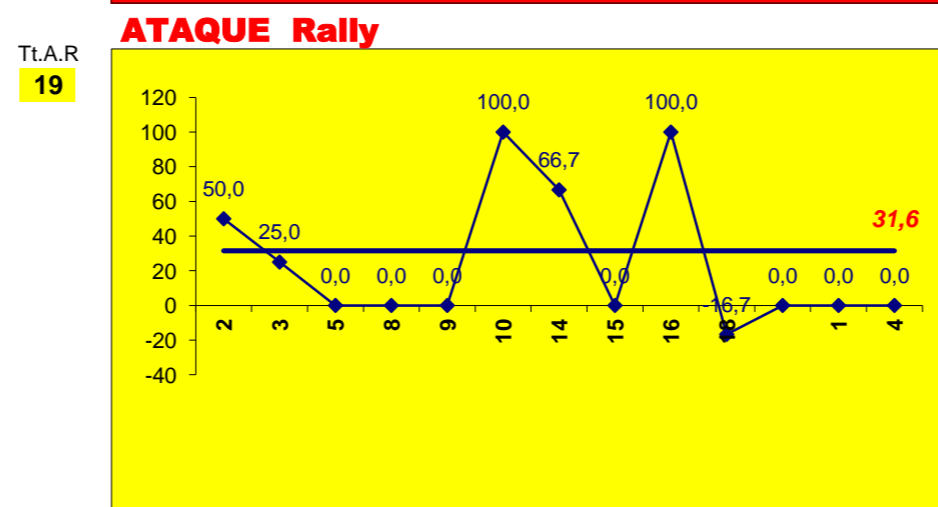
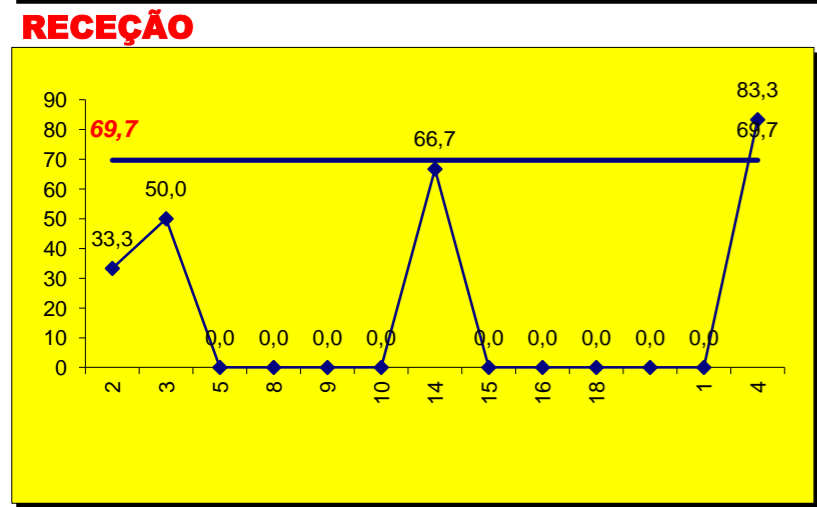
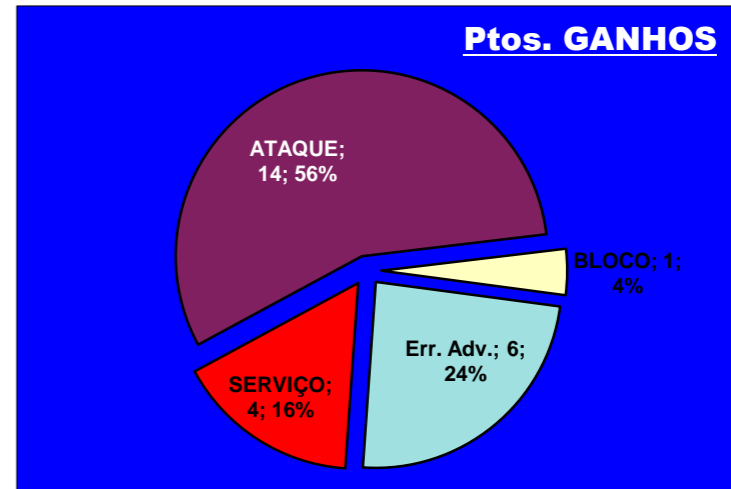
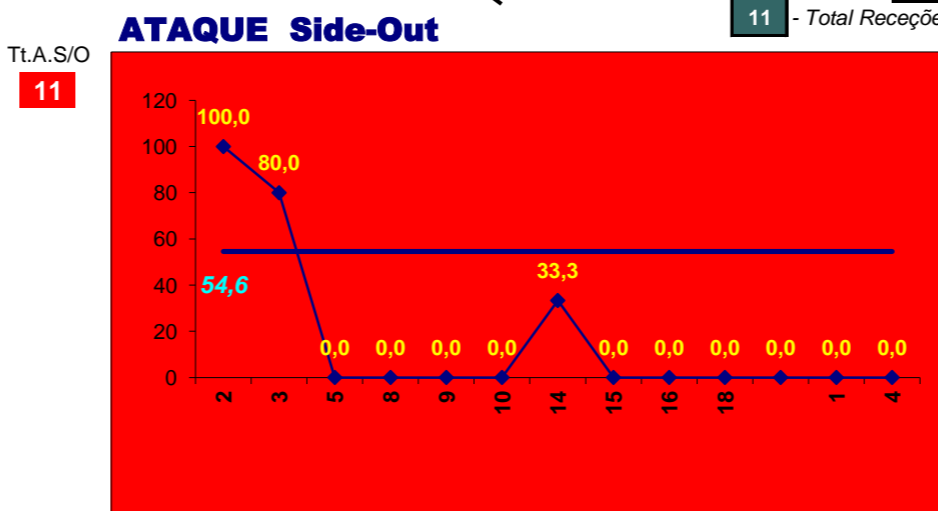
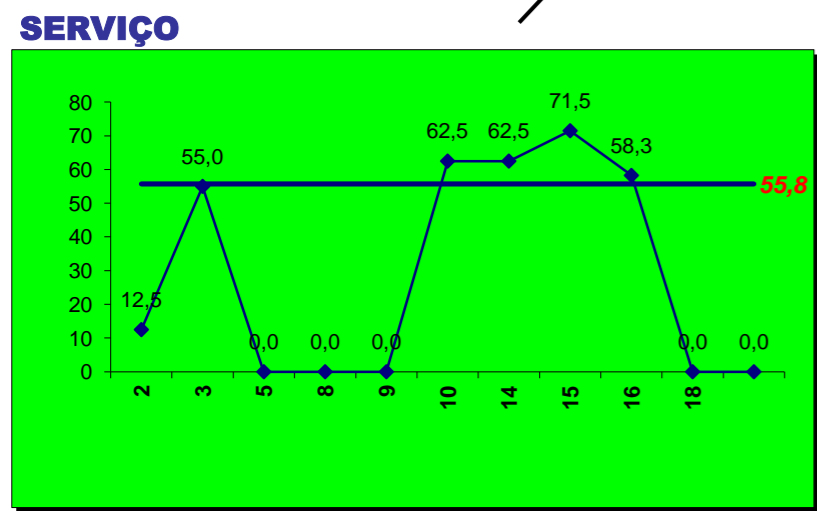
ATAQUE																		
K-s/o	C-s/o	E-s/o	K-ral	C-ral	E-ral	Kill	Cont.	Err	S/O	Rally	Atk	EAsc	EKsc	Ear	Ekr	E.At	E.K	
1			2	2		3	2	0	1	4	5	100	100	50	50	60	60	
4	1		1	3		5	4	0	5	4	9	80	80	25	25	56	56	
						0	0	0	0	0	0	###	###	###	###	###	###	
						0	0	0	0	0	0	###	###	###	###	###	###	
						0	0	0	0	0	0	###	###	###	###	###	###	
			1			1	0	0	0	1	1	###	###	100	100	100	100	
1	2		2	1		3	3	0	3	3	6	33	33	67	67	50	50	
	1					0	1	0	1	0	1	0	0	###	###	0	0	
	1		1			1	1	0	1	1	2	0	0	100	100	50	50	
			1	3	2	1	3	2	0	6	6	###	###	-17	17	-17	17	
						0	0	0	0	0	0	###	###	###	###	###	###	
						0	0	0	0	0	0	###	###	###	###	###	###	
<b>VITORIA SC</b>	<b>6</b>	<b>5</b>	<b>0</b>	<b>8</b>	<b>9</b>	<b>2</b>	<b>14</b>	<b>14</b>	<b>2</b>	<b>11</b>	<b>19</b>	<b>30</b>	<b>55</b>	<b>55</b>	<b>32</b>	<b>42</b>	<b>40</b>	<b>47</b>

BLOCO					
K	C	E	Tt.	Ef.	
1	1	2		-50	
1	2	3		33	
				###	
				###	
				###	
				###	
				###	
				###	
				###	
				###	
				###	
				###	
				###	
				###	
				###	
				###	
				###	
				###	
				###	
				###	
				###	
<b>VITORIA SC</b>	<b>1</b>	<b>6</b>	<b>1</b>	<b>8</b>	<b>0</b>

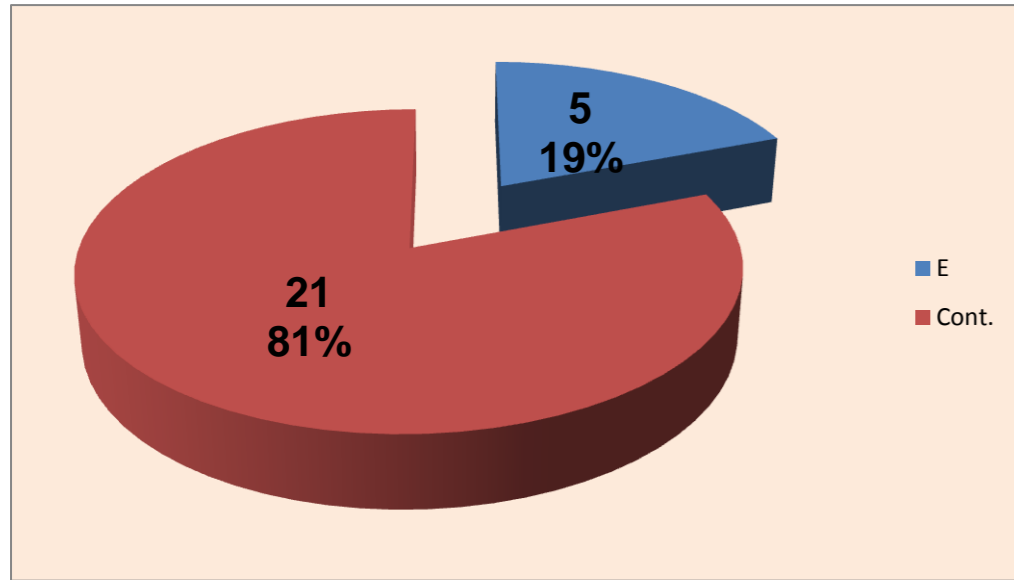
DEFESA			
E	Cont.	Tt.	
	2	2	
2	4	6	
		0	
		0	
		0	
		0	
		0	
2	1	3	
	4	4	
1	2	3	
		0	
		0	
		0	
		0	
		0	
		0	
		0	
		0	
		0	
		0	
		0	
		0	
		0	
<b>VITORIA SC</b>	<b>5</b>	<b>21</b>	<b>26</b>

PASSE			
E	R/C	Cont.	
<b>VITORIA SC</b>	<b>0</b>	<b>3</b>	<b>24</b>

Adversário: **ADREP**  
 Ef. RECEÇÃO - **1,4 47,3 %**  
 Ef. SERVIÇO - **1,8 44 %**  
 Outros ERROS ADVERSÁRIOS - **5**  
 Total Kills S-O: **6**  
 Total Receções: **11**  
 Total Falhados: **1**  
 Total Eficácia de SIDE-OUT: **55 %**

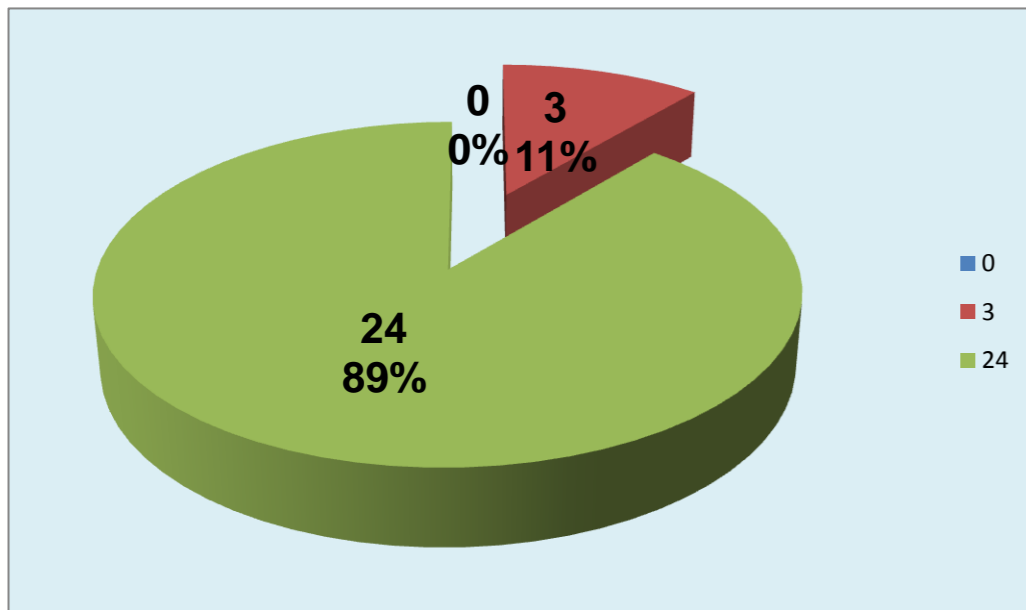
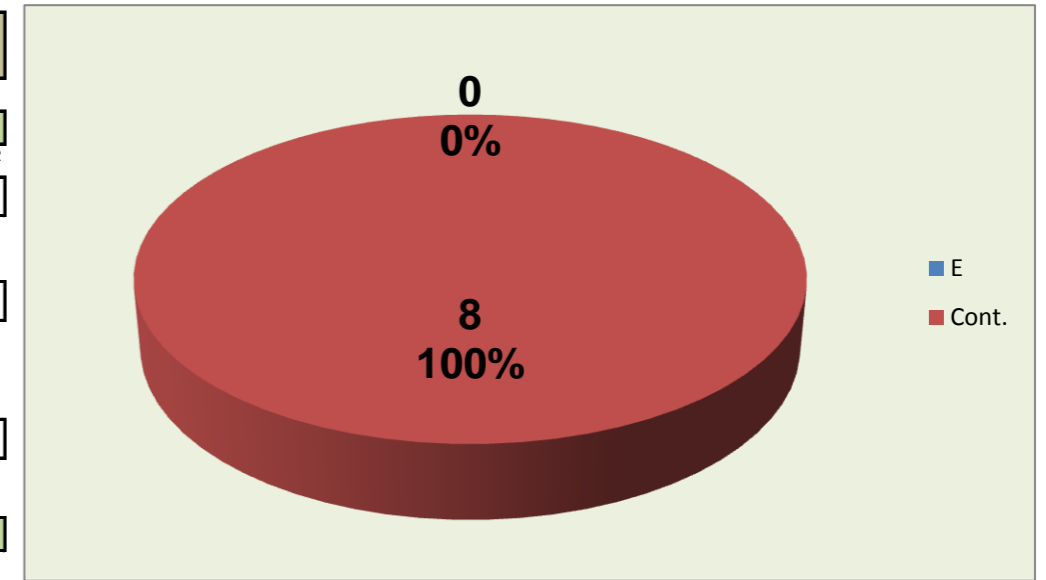






## DEFESA

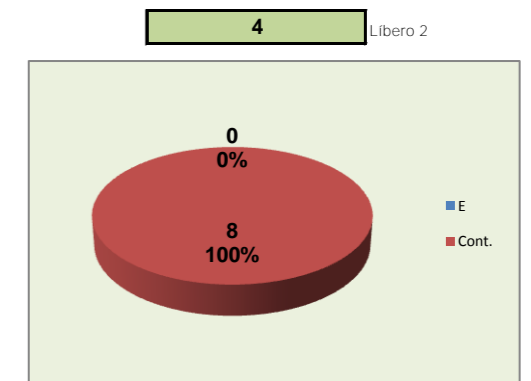
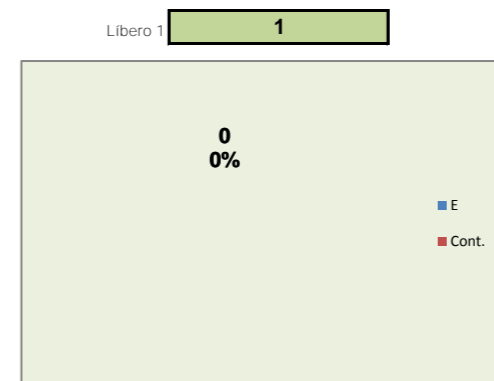
	VITORIA SC <small>Team</small>	LÍBEROS <small>Liberos</small>	1 <small>Libero 1</small>	4 <small>Libero 2</small>
Total	26	8	0	8
Erro	5 <small>19%</small>	0 <small>0%</small>	0 <small>#DIV/0!</small>	0 <small>0%</small>
Cont.	21 <small>81%</small>	8 <small>100%</small>	0 <small>#DIV/0!</small>	8 <small>100%</small>



## PASSE

### Relação da Distribuição

Total de Distribuições	27
Jogo Rápido / Combin.	3 <small>11%</small>
Distribuição Normal	24 <small>89%</small>
Erros de Passe	0 <small>0%</small>





# Fase Final 8 - Juniores Femininos 2011-2012

Jogo : **VITORIA SC** x **ADREP**

**2º. Set**

Resultado : **25** - **11**

Duração : **0** m

Resultados Globais

	SERVIÇO			ATAQUE			BLOCO			DEFESA	RECEÇÃO	PASSE
	T	+	-	T	+	-	T	+	-			
2	1	0	1	3	3	0	1	0	1	0	0	0
3	2	1	1	5	5	0	1	1	0	2	0	0
5	0	0	0	0	0	0	0	0	0	0	0	0
8	0	0	0	0	0	0	0	0	0	0	0	0
9	0	0	0	0	0	0	0	0	0	0	0	0
10	0	0	0	1	1	0	0	0	0	0	0	0
14	0	0	0	3	3	0	0	0	0	2	0	0
15	3	3	0	0	0	0	0	0	0	0	0	0
16	0	0	0	1	1	0	0	0	0	1	0	0
18	1	0	1	3	1	2	0	0	0	0	0	0
0	0	0	0	0	0	0	0	0	0	0	0	0
1				0	0	0				0	0	0
4				0	0	0				0	0	0
<b>VITORIA SC</b>	<b>7</b>	<b>4</b>	<b>3</b>	<b>16</b>	<b>14</b>	<b>2</b>	<b>2</b>	<b>1</b>	<b>1</b>	<b>5</b>	<b>0</b>	<b>0</b>

Total		
T	P+	P-
5	3	2
10	7	3
0	0	0
0	0	0
0	0	0
1	1	0
5	3	2
3	3	0
2	1	1
4	1	3
0	0	0
0	0	0
0	0	0
<b>30</b>	<b>19</b>	<b>11</b>

Eficácia Absoluta (%)		
P+	P-	Final
60	40	20
70	30	40
#DIV/0!	#DIV/0!	#DIV/0!
#DIV/0!	#DIV/0!	#DIV/0!
#DIV/0!	#DIV/0!	#DIV/0!
100	0	100
60	40	20
100	0	100
50	50	0
25	75	-50
#DIV/0!	#DIV/0!	#DIV/0!
#DIV/0!	#DIV/0!	#DIV/0!
#DIV/0!	#DIV/0!	#DIV/0!
<b>63,3</b>	<b>36,7</b>	<b>26,7</b>

Eficácia Relativa (%)		
P+	P-	Final
15,8	18,2	3,3
36,8	27,3	13,3
0	0	0
0	0	0
0	0	0
5,3	0	3,3
15,8	18,2	3,3
15,8	0	10
5,3	9,1	0
5,3	27,3	-6,7
0	0	0
0	0	0
0	0	0
100%	100%	

**Pontos de Ataque**

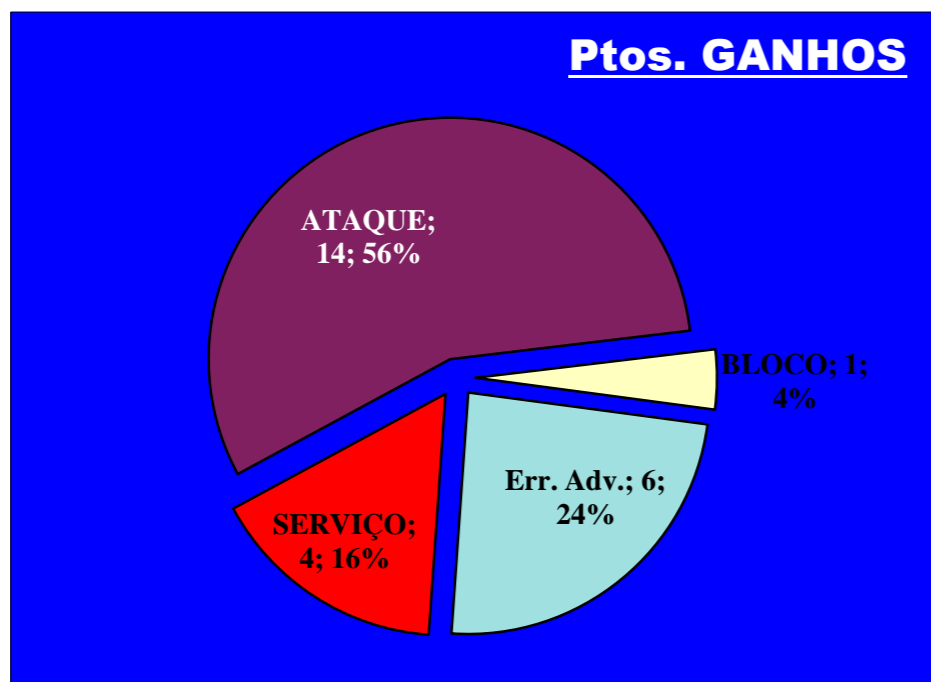
**6** : Erros do Adversário

**0** : Pontos "+" Não Reportados

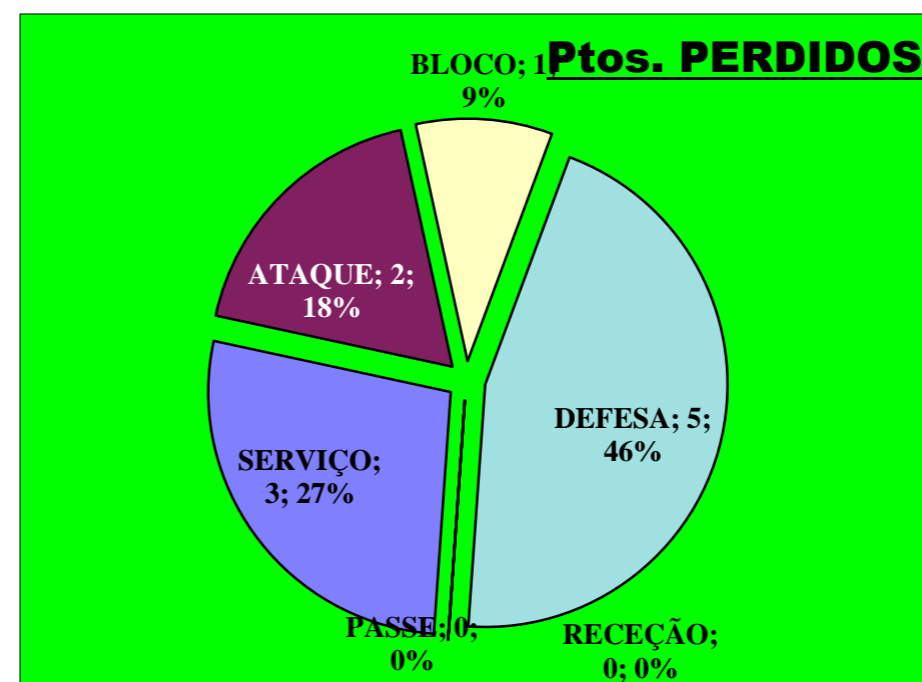
**0** : Pontos "-" Não Reportados

PONTOS GANHOS **25**

PONTOS PERDIDOS **11**



**25**



**11**



# Fase Final 8 - Juniores Femininos 2011-2012

Jogo : **VITORIA SC** x **ADREP**

**3º. Set**

Resultado : **25** - **15**

Duração :  m

Atletas	RECEÇÃO					Ef.			Tt.	SERVIÇO			Ef.				
	0	1	2	3	%	0	1	2		3	4	%	0	1	2	3	4
2			2		66,7	2	1	1	4	1,8	44						
3					###	0	###	###	3	3,3	83						
5					###	0	###	###	5	2,4	60						
8	1				0,0	1	0	0,0	4	1,3	31						
9		1	1		50,0	2	1,5	50,0	0	###	###						
10					###	0	###	###	3	2,3	58						
14		1	2		55,7	0	###	###	6	2,7	67						
15		1	1		50,0	0	###	###	0	###	###						
16					###	0	###	###	0	###	###						
18					###	0	###	###	0	###	###						
0					###	0	###	###	0	###	###						
1					###	0	###	###	0	###	###						
4		2	2		66,7	4	2	66,7									
<b>VITORIA SC</b>	1	5	2		<b>54,7</b>	4	2	<b>57</b>	<i>(entre 0 e 3)</i>			<i>(entre 0 e 4)</i>					

ATAQUE																				
K-s/o	C-s/o	E-s/o	K-ral	C-ral	E-ral	Kill	Cont.	Err	S/O	Rally	Atk	EAsc	Eksc	Ear	Ekr	E.At	E.K			
2	1		1	2		1	4	1	3	3	6	-33	0	33	33	0	17			
			3			3	0	0	0	3	3	###	###	100	100	100	100			
						0	0	0	0	0	0	###	###	###	###	###	###			
1				2		0	3	0	1	2	3	0	0	0	0	0	0			
1				1	2	1	3	0	1	3	4	0	0	33	33	25	25			
2				3		0	5	0	2	3	5	0	0	0	0	0	0			
2				2	2	4	2	0	2	4	6	100	100	50	50	67	67			
1	3			3	1	4	4	0	4	4	8	25	25	75	75	50	50			
						0	0	0	0	0	0	###	###	###	###	###	###			
						0	0	0	0	0	0	###	###	###	###	###	###			
						0	0	0	0	0	0	###	###	###	###	###	###			
						0	0	0	0	0	0	###	###	###	###	###	###			
						0	0	0	0	0	0	###	###	###	###	###	###			
						0	0	0	0	0	0	###	###	###	###	###	###			
						0	0	0	0	0	0	###	###	###	###	###	###			
<b>3</b>	<b>9</b>	<b>1</b>	<b>11</b>	<b>12</b>	<b>0</b>	<b>14</b>	<b>21</b>	<b>1</b>	<b>13</b>	<b>23</b>	<b>36</b>	<b>15</b>	<b>23</b>	<b>48</b>	<b>48</b>	<b>36</b>	<b>39</b>			

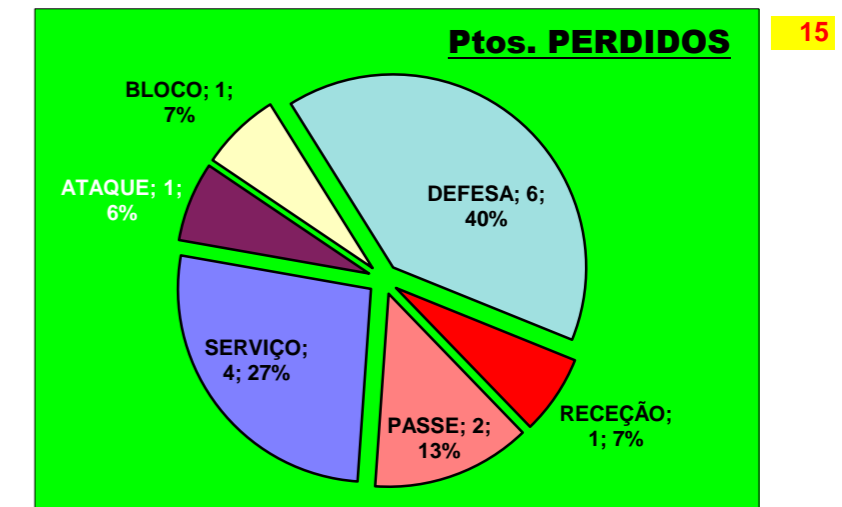
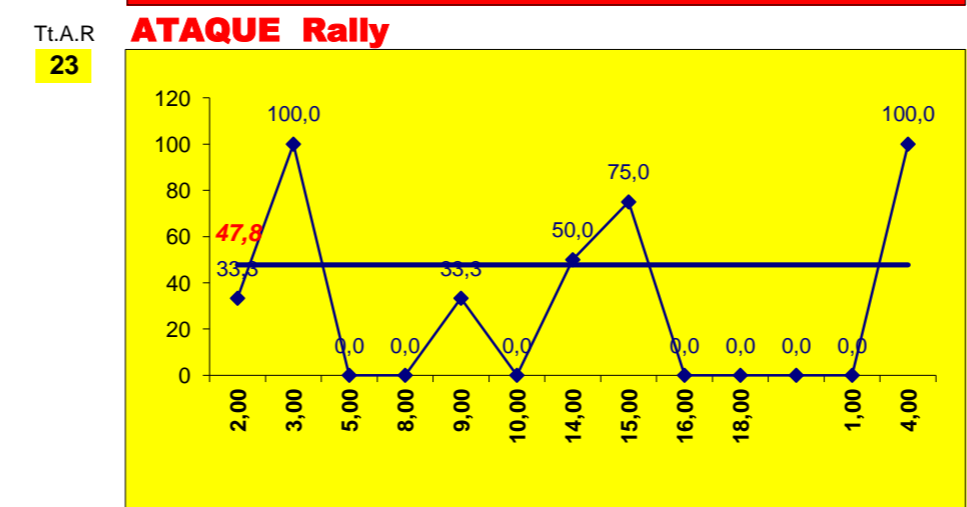
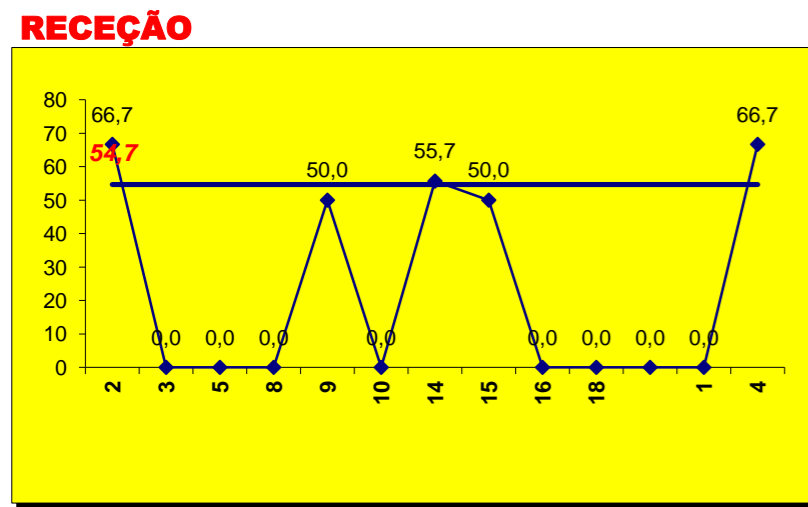
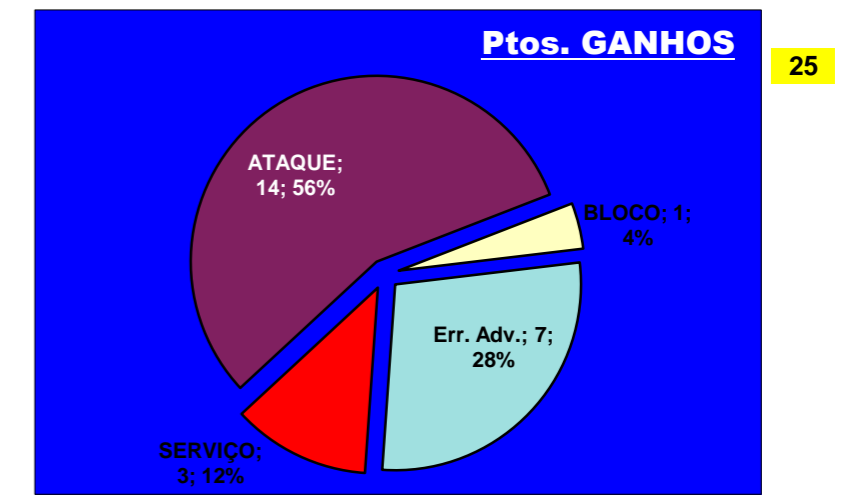
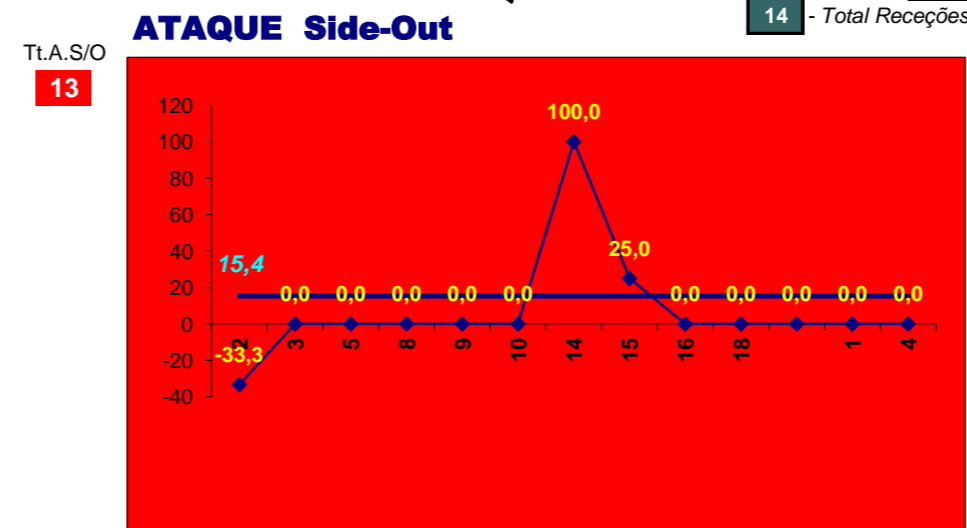
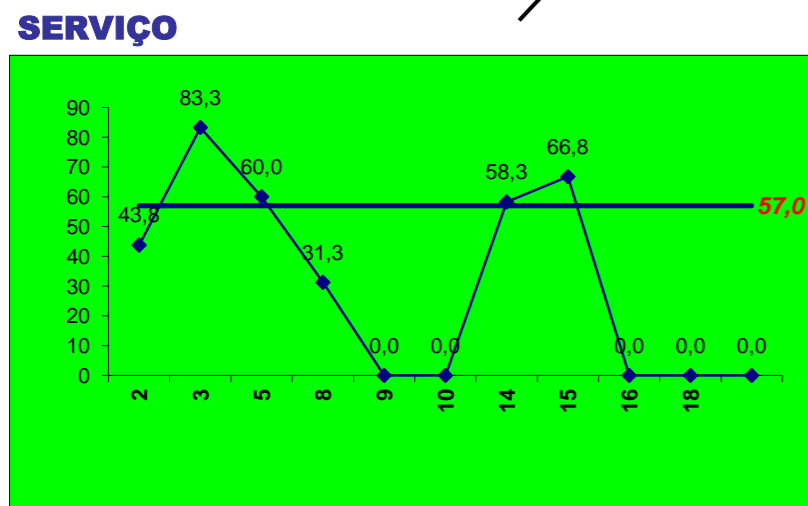
BLOCO				
K	C	E	Tt.	Ef.
1			1	0
1	1		2	0
			0	###
			0	###
1			1	0
			0	###
1			1	0
			0	###
			0	###
			0	###
			0	###
			0	###
			0	###
			0	###
			0	###
			0	###
			0	###
			0	###
<b>1</b>	<b>3</b>	<b>1</b>	<b>5</b>	<b>0</b>

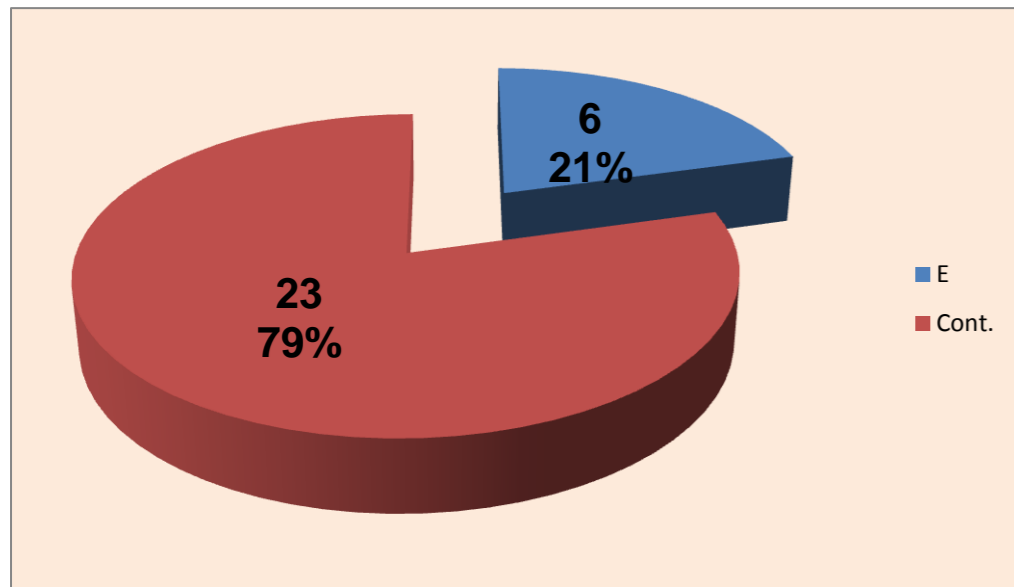
DEFESA		
E	Cont.	Tt.
	1	1
1	8	9
	2	3
	3	3
		0
		0
	1	1
2	3	5
		0
		0
		0
		0
		0
		0
		0
		0
		0
		0
<b>6</b>	<b>23</b>	<b>29</b>

PASSE		
E	R/C	Cont.
		3
2	4	12
<b>2</b>	<b>5</b>	<b>29</b>

Adversário **ADREP** Ef. RECEÇÃO - **1,3** **43,0** % **1** Falhados Ef. SERVIÇO - **2,2** **55** %

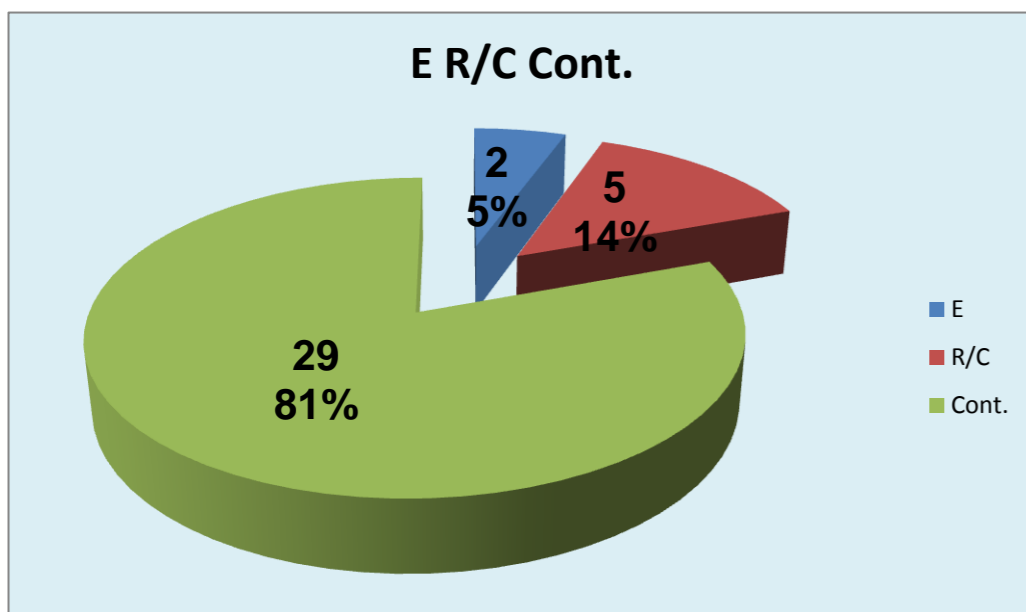
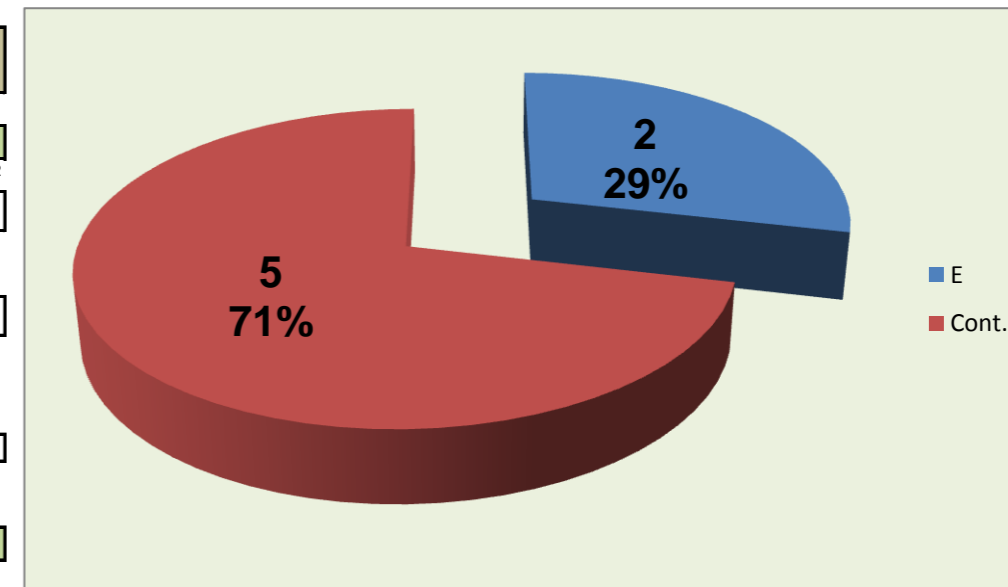
Outros ERROS ADVERSÁRIOS - **6** **3** - Total Kills S-O **21** % - N/ Eficácia de SIDE-OUT **14** - Total Receções





## DEFESA

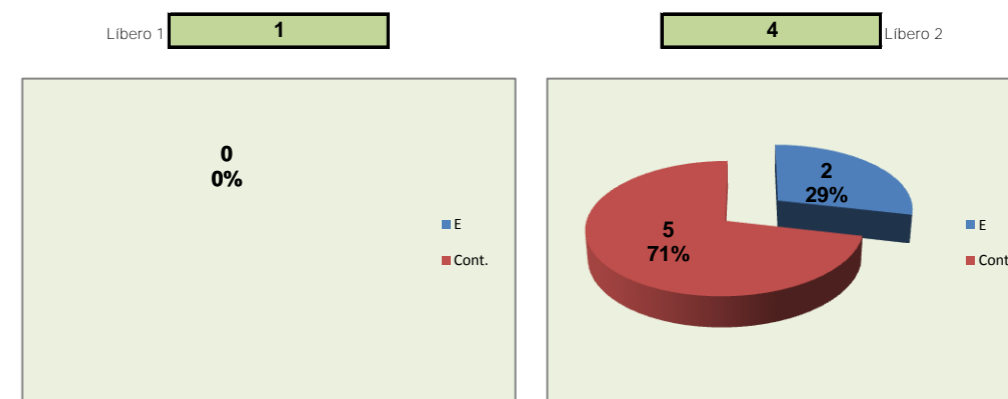
	VITORIA SC Team	LÍBEROS Liberos	1 Libero 1	4 Libero 2
Total	29	7	0	7
Erro	6 21%	2 29%	0 #DIV/0!	2 29%
Cont.	23 79%	5 71%	0 #DIV/0!	5 71%



## PASSE

### Relação da Distribuição

Total de Distribuições	36
Jogo Rápido / Combin.	5 14%
Distribuição Normal	29 81%
Erros de Passe	2 6%





# Fase Final 8 - Juniores Femininos 2011-2012

Jogo : **VITORIA SC** x **ADREP**

**3º. Set**

Resultado : **25** - **15**

Duração : **0** m

Resultados Globais

	SERVIÇO			ATAQUE			BLOCO			DEFESA	RECEÇÃO	PASSE
	T	+	-	T	+	-	T	+	-			
2	2	1	1	2	1	1	0	0	0	0	0	0
3	1	1	0	3	3	0	2	1	1	1	0	0
5	0	0	0	0	0	0	0	0	0	1	0	2
8	2	0	2	0	0	0	0	0	0	0	1	0
9	0	0	0	1	1	0	0	0	0	0	0	0
10	0	0	0	0	0	0	0	0	0	0	0	0
14	0	0	0	4	4	0	0	0	0	0	0	0
15	2	1	1	4	4	0	0	0	0	2	0	0
16	0	0	0	0	0	0	0	0	0	0	0	0
18	0	0	0	0	0	0	0	0	0	0	0	0
0	0	0	0	0	0	0	0	0	0	0	0	0
1				0	0	0				0	0	0
4				1	1	0				2	0	0
<b>VITORIA SC</b>	<b>7</b>	<b>3</b>	<b>4</b>	<b>15</b>	<b>14</b>	<b>1</b>	<b>2</b>	<b>1</b>	<b>1</b>	<b>6</b>	<b>1</b>	<b>2</b>

Total		
T	P+	P-
4	2	2
7	5	2
3	0	3
3	0	3
1	1	0
0	0	0
4	4	0
8	5	3
0	0	0
0	0	0
0	0	0
0	0	0
3	1	2
<b>33</b>	<b>18</b>	<b>15</b>

Eficácia Absoluta (%)		
P+	P-	Final
50	50	0
71,4	28,6	42,9
0	100	-100
0	100	-100
100	0	100
#DIV/0!	#DIV/0!	#DIV/0!
100	0	100
62,5	37,5	25
#DIV/0!	#DIV/0!	#DIV/0!
#DIV/0!	#DIV/0!	#DIV/0!
#DIV/0!	#DIV/0!	#DIV/0!
#DIV/0!	#DIV/0!	#DIV/0!
33,3	66,7	-33,3
<b>54,5</b>	<b>45,5</b>	<b>9,1</b>

Eficácia Relativa (%)		
P+	P-	Final
11,1	13,3	0
27,8	13,3	9,1
0	20	-9,1
0	20	-9,1
5,6	0	3
0	0	0
22,2	0	12,1
27,8	20	6,1
0	0	0
0	0	0
0	0	0
5,6	13,3	-3

**Pontos de Ataque**

+      -

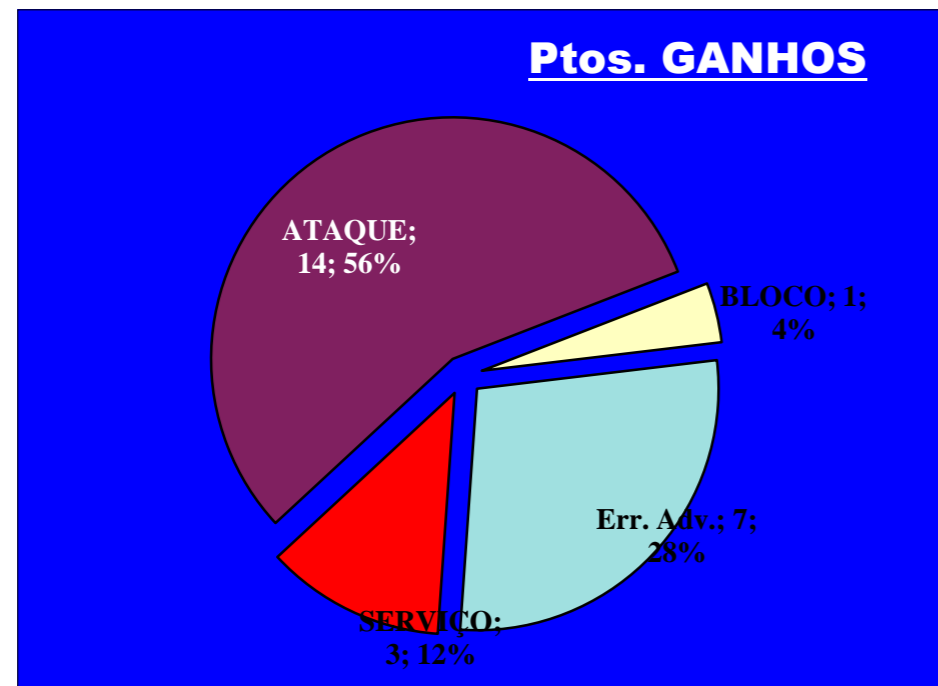
**7** : Erros do Adversário

**0** : Pontos "+" Não Reportados

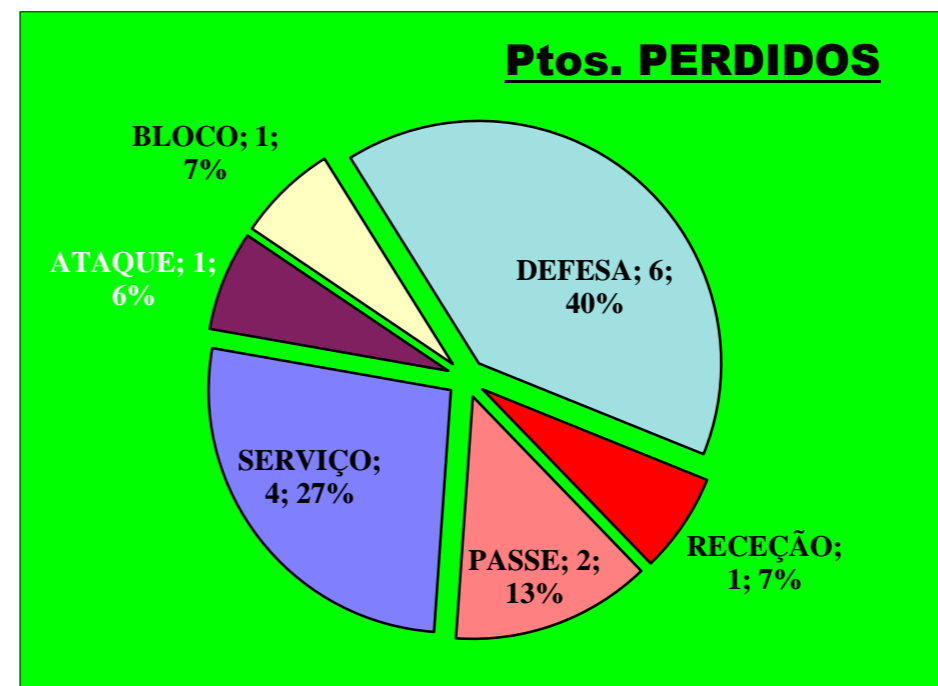
**0** : Pontos "-" Não Reportados

PONTOS GANHOS - **25**

PONTOS PERDIDOS - **15**



**25**



**15**